



**Visit Campus!**

Scan here to schedule your tour or visit online at [lander.edu/visit](http://lander.edu/visit).

**Saturday Open Houses**

Sep. 30, 2023 Feb. 24, 2024  
Oct. 28, 2023 Mar. 23, 2024

**Daily Tours**

M-F, 10 AM & 2 PM



320 Stanley Avenue | Greenwood, SC 29649  
1-888-4LANDER | 864-388-8307  
[admissions@lander.edu](mailto:admissions@lander.edu) | [lander.edu](http://lander.edu)

For a complete list of academic programs, please visit: [lander.edu/majors-minors](http://lander.edu/majors-minors).

Lander University provides equal access and does not discriminate on the basis of race, color, sex, sexual orientation, religion, national origin, pregnancy, gender, gender identity, gender expression, genetic information, disability or age in its programs and activities. For further information on Lander's notice of nondiscrimination, visit [lander.edu/titleix](http://lander.edu/titleix) and [lander.edu/non-discrimination](http://lander.edu/non-discrimination).

**Majors**

- Biology
  - Genetics
- Business Administration (BAS)
  - Accounting
  - Financial Services
  - Health Care Management
  - Hospitality Management
  - IT Management
  - Management/Marketing
  - Sports Management
- Chemistry
  - Dual Engineering
  - Forensic Science
  - Health Sciences
  - Secondary Certification
- Computer Information Systems
  - Dual Engineering
  - Networking
  - Software Development
- Criminology
- Cybersecurity
  - Computer Information Systems
  - Political Science
- Data Science
  - Business Analytics
  - Computer Information Systems
  - Mathematics
- Digital Media Production
- Early Childhood Education
  - Montessori
- Elementary Education
- English
  - Creative Writing
  - Professional Writing
  - Secondary Teacher Certification
- Entrepreneurship
- Environmental Science
- Forensic Science
- Exercise Science
- Fitness & Wellness
- Graphic Design
- History
  - Public History
  - Secondary Social Studies Teacher Certification
- Human Services
- Humanities
- Interdisciplinary Studies
  - Allied Health Studies
  - Educational Psychology for Special Populations
  - Environmental Health
  - Equine-Assisted Activities & Therapies
  - Financial Services & Public Relations
  - Graphic Design & Marketing
  - Health Promotion & Wellness: Behavioral Health
  - Health Promotion & Wellness: Healthcare Management
  - Health Promotion & Wellness: Human Services
  - Health Promotion & Wellness: Policy
  - International Environment & Sustainability Management, Public Relations
  - Studies in Early Childhood Education & Psychology
  - Studies in Early Childhood with Special Needs
  - Teaching & Learning for Diverse Elementary Students (Reading/Media)
- International Studies
- Mathematics
  - Dual Engineering
  - Secondary Teacher Certification
- Media & Communication
- Medical Biology
- Middle Level Education
- Music
  - Instrumental
  - Keyboard
  - Vocal
  - K-12 Certification, Choral
  - K-12 Certification, Instrumental
  - K-12 Certification, Keyboard
- Nursing
  - Prelicensure
  - RN to BSN Completion
- Paralegal Studies
- Physical Education,
  - K-12 Teacher Certification
- Political Science
  - Public Administration
- Psychology
  - Genetic Health Studies
- Sociology
- Spanish
  - Special Education
- Visual Art
  - 2D Studio
  - 3D Studio
  - K-12 Teacher Certification

**Minors**

- Art History
- Biology
- Business Administration
- Ceramics
- Chemistry
- Child & Family Studies
- Computer Information Systems
- Criminal Justice
- Cybersecurity
- Data Science
- Design
- English
- Entrepreneurship
- Environmental Science
- Esports Management & Administration
- European Studies
- Forensic Science
- Film Studies
- French
- General Studio Art
- Health Care Management
- History
- Homeland Security
- Human Services
- Information Technology
- International Business
- International Studies
- Mathematics
- Media & Communication
- Media Writing
- Military Science & Leadership
- Music
- Music History
- Non-Profit Management
- Painting & Drawing
- Philosophy
- Photography
- Political Science
- Pre-Law
- Pre-Social Work
- Psychology
- Public Administration
- Public Health
- Public Relations
- Religion
- Sculpture
- Sociology
- Spanish
- Speech & Performance
- Sports Management
- Sports Media
- Therapeutic Horsemanship
- Writing

**Pre-Professional Studies**

- Pre-Athletic Training
- Pre-Dentistry
- Pre-Medicine
- Pre-Occupational Therapy
- Pre-Optometry
- Pre-Pharmacy
- Pre-Physical Therapy
- Pre-Physician Assistant
- Pre-Veterinary Medicine

# LAUNCH YOUR FUTURE WITH LANDER



YOUR STATE UNIVERSITY IN GREENWOOD, S.C.

A PERFECT FIT  
**4,200**  
APPROXIMATE STUDENT BODY SIZE

FOUNDED  
**1872**  
FOUR-YEAR, PUBLIC, COEDUCATIONAL UNIVERSITY—ONE OF SOUTH CAROLINA'S OLDEST INSTITUTIONS OF HIGHER EDUCATION

RELEVANT NOW  
**90+**  
AREAS OF STUDY AND MARKET-DRIVEN PROGRAMS IN TODAY'S MOST IN-DEMAND FIELDS

CAREER FOCUSED  
**60+**  
NUMBER OF EMPLOYER RECRUITING AND GRADUATE SCHOOL REPS VISITING LANDER EACH YEAR

BE A NAME  
**20**  
AVERAGE CLASS SIZE WITH A STUDENT-TO-FACULTY RATIO OF 16:1

Frozen Tuition  
**\$11,700**  
UNDERGRADUATE IN-STATE, FULL-TIME TUITION & GENERAL FEES  
While Lander is rapidly growing, one thing that's not increasing is the cost to attend.

You've envisioned it before.  
Your future.  
It's big, and it's bold.  
Because that's what your potential demands.  
Now, it's time to make it happen.  
At Lander University,  
the best way to launch big, bold futures...  
*is together.*

**Our Promise to You**  
You'll find employment in your field within 60 days of graduation, or Lander will hire you as a graduate assistant and guarantee your acceptance into the Lander graduate program of your choice.\*  
As a graduate assistant, you will save 50% on graduate tuition and receive a \$6,000 stipend per year—that's Lander's commencement-to-career promise.

\*To qualify, students must graduate from Lander in four years with at least a 3.0 GPA. Offer begins for Class of 2025. Additional admissions requirements may apply for specific graduate programs.



**Visit Campus!**

Scan here to schedule your tour or visit online at [lander.edu/visit](http://lander.edu/visit).

Daily Tours M-F, 10:00 a.m. & 2:00 p.m.



320 Stanley Avenue | Greenwood, SC 29649  
 1-888-4LANDER | 864-388-8307  
[admissions@lander.edu](mailto:admissions@lander.edu) | [lander.edu](http://lander.edu)

For a complete list of academic programs, please visit: [lander.edu/majors-minors](http://lander.edu/majors-minors)

Lander University provides equal access and does not discriminate on the basis of race, color, sex, sexual orientation, religion, national origin, pregnancy, gender, gender identity, gender expression, genetic information, disability or age in its programs and activities. For further information on Lander's notice of nondiscrimination, visit [lander.edu/titleix](http://lander.edu/titleix) and [lander.edu/non-discrimination](http://lander.edu/non-discrimination).

**Majors**

- Biology
  - Genetics
- Business Administration (BAS)
  - Accounting
  - Financial Services
  - Health Care Management
  - Hospitality Management
  - IT Management
  - Management/Marketing
  - Sports Management
- Chemistry
  - Dual Engineering
  - Forensic Science
  - Health Sciences
  - Secondary Certification
- Computer Information Systems
  - Dual Engineering
  - Networking
  - Software Development
- Criminology
- Cybersecurity
  - Computer Information Systems
  - Political Science
- Data Science
  - Business Analytics
  - Computer Information Systems
  - Mathematics
- Digital Media Production
- Early Childhood Education
  - Montessori
- Elementary Education
- English
  - Creative Writing
  - Professional Writing
  - Secondary Teacher Certification
- Entrepreneurship
- Environmental Science
  - Forensic Science
- Exercise Science
- Fitness & Wellness
- Graphic Design
- History
  - Public History
  - Secondary Social Studies Teacher Certification
- Human Services
- Humanities
- Interdisciplinary Studies
  - Allied Health Studies
  - Educational Psychology for Special Populations
  - Environmental Health
  - Equine-Assisted Activities & Therapies
  - Financial Services & Public Relations
  - Graphic Design & Marketing
  - Health Promotion & Wellness: Behavioral Health
  - Health Promotion & Wellness: Healthcare Management
  - Health Promotion & Wellness: Human Services
  - Health Promotion & Wellness: Policy
  - International Environment & Sustainability Management, Public Relations
  - Studies in Early Childhood Education & Psychology
  - Studies in Early Childhood with Special Needs
  - Teaching & Learning for Diverse Elementary Students (Reading/Media)
- International Studies
- Mathematics
  - Dual Engineering
  - Secondary Teacher Certification
- Media & Communication
  - Medical Biology
  - Middle Level Education
- Music
  - Instrumental
  - Keyboard
  - Vocal
  - K-12 Certification, Choral
  - K-12 Certification, Instrumental
  - K-12 Certification, Keyboard
- Nursing
  - Prelicensure
  - RN to BSN Completion
- Paralegal Studies
- Physical Education
  - K-12 Teacher Certification
- Political Science
  - Public Administration
- Psychology
  - Public Health
  - Genetic Health Studies
- Sociology
- Spanish
  - Special Education
- Visual Art
  - 2D Studio
  - 3D Studio
  - K-12 Teacher Certification

**Minors**

- Art History
- Biology
  - Business Administration
- Ceramics
- Chemistry
  - Child & Family Studies
- Computer Information Systems
- Criminal Justice
- Cybersecurity
- Data Science
- Design
- English
- Entrepreneurship
- Environmental Science
- Esports Management & Administration
- European Studies
- Forensic Science
- Film Studies
- French
- General Studio Art
- Health Care Management
- History
  - Homeland Security
  - Human Services
  - Information Technology
  - International Business
  - International Studies
- Mathematics
  - Media & Communication
- Media Writing
- Military Science & Leadership
- Music
  - Music History
  - Non-Profit Management
- Painting & Drawing
- Philosophy
- Photography
- Political Science
- Pre-Law
- Pre-Social Work
- Psychology
  - Public Administration
  - Public Health
  - Public Relations
  - Religion
  - Sculpture
  - Sociology
  - Spanish
  - Speech & Performance
  - Sports Management
  - Sports Media
  - Therapeutic Horsemanship
  - Writing

**Pre-Professional Studies**

- Pre-Athletic Training
- Pre-Dentistry
- Pre-Medicine
- Pre-Occupational Therapy
- Pre-Optometry
- Pre-Pharmacy
- Pre-Physical Therapy
- Pre-Physician Assistant
- Pre-Veterinary Medicine

# LAUNCH YOUR FUTURE WITH LANDER



YOUR STATE UNIVERSITY IN GREENWOOD, S.C.

**Frozen Tuition** **\$11,700** UNDERGRADUATE IN-STATE, FULL-TIME TUITION & GENERAL FEES  
 While Lander is rapidly growing, one thing that's not increasing is the cost to attend.

**RELEVANT NOW**  
**90+** AREAS OF STUDY AND MARKET-DRIVEN PROGRAMS IN TODAY'S MOST IN-DEMAND FIELDS

**A PERFECT FIT**  
**4,200** APPROX. STUDENT BODY SIZE, WITH AN AVERAGE CLASS SIZE OF 20

**CAREER FOCUSED**  
**60+** NUMBER OF EMPLOYER RECRUITING AND GRADUATE SCHOOL REPS VISITING LANDER EACH YEAR

**FOUNDED**  
**1872** FOUR-YEAR, PUBLIC, COEDUCATIONAL UNIVERSITY—ONE OF SOUTH CAROLINA'S OLDEST INSTITUTIONS OF HIGHER EDUCATION

You've envisioned it before.  
 Your future.  
 It's big, and it's bold.  
 Because that's what your potential demands.  
 Now, it's time to make it happen.  
 At Lander University,  
 the best way to launch big, bold futures...  
*is together.*

**Our Promise to You**  
 You'll find employment in your field within 60 days of graduation, or Lander will hire you as a graduate assistant and guarantee your acceptance into the Lander graduate program of your choice.\* As a graduate assistant, you will save 50% on graduate tuition and receive a \$6,000 stipend per year—that's Lander's commencement-to-career promise.

\*To qualify, students must graduate from Lander in four years with at least a 3.0 GPA. Offer begins for Class of 2025. Additional admissions requirements may apply for specific graduate programs.



**Visit Campus!**

Scan here to schedule your tour or visit online at [lander.edu/visit](http://lander.edu/visit).

Daily Tours M-F, 10:00 a.m. & 2:00 p.m.



320 Stanley Avenue | Greenwood, SC 29649  
 1-888-4LANDER | 864-388-8307  
[admissions@lander.edu](mailto:admissions@lander.edu) | [lander.edu](http://lander.edu)

For a complete list of academic programs, please visit: [lander.edu/majors-minors](http://lander.edu/majors-minors)

Lander University provides equal access and does not discriminate on the basis of race, color, sex, sexual orientation, religion, national origin, pregnancy, gender, gender identity, gender expression, genetic information, disability or age in its programs and activities. For further information on Lander's notice of nondiscrimination, visit [lander.edu/titleix](http://lander.edu/titleix) and [lander.edu/non-discrimination](http://lander.edu/non-discrimination).

**Majors**

- Biology
  - Genetics
- Business Administration (BAS)
  - Accounting
  - Financial Services
  - Health Care Management
  - Hospitality Management
  - IT Management
  - Management/Marketing
  - Sports Management
- Chemistry
  - Dual Engineering
  - Forensic Science
  - Health Sciences
  - Secondary Certification
- Computer Information Systems
  - Dual Engineering
  - Networking
  - Software Development
- Criminology
- Cybersecurity
  - Computer Information Systems
  - Political Science
- Data Science
  - Business Analytics
  - Computer Information Systems
  - Mathematics
- Digital Media Production
- Early Childhood Education
  - Montessori
- Elementary Education
- English
  - Creative Writing
  - Professional Writing
  - Secondary Teacher Certification
- Entrepreneurship
- Environmental Science
  - Forensic Science
- Exercise Science
- Fitness & Wellness
- Graphic Design
- History
  - Public History
  - Secondary Social Studies Teacher Certification
- Human Services
- Humanities
- Interdisciplinary Studies
  - Allied Health Studies
  - Educational Psychology for Special Populations
  - Environmental Health
  - Equine-Assisted Activities & Therapies
  - Financial Services & Public Relations
  - Graphic Design & Marketing
  - Health Promotion & Wellness: Behavioral Health
  - Health Promotion & Wellness: Healthcare Management
  - Health Promotion & Wellness: Human Services
  - Health Promotion & Wellness: Policy
  - International Environment & Sustainability Management, Public Relations
  - Studies in Early Childhood Education & Psychology
  - Studies in Early Childhood with Special Needs
  - Teaching & Learning for Diverse Elementary Students (Reading/Media)
- International Studies
- Mathematics
  - Dual Engineering
  - Secondary Teacher Certification
- Media & Communication
- Medical Biology
- Middle Level Education
- Music
  - Instrumental
  - Keyboard
  - Vocal
  - K-12 Certification, Choral
  - K-12 Certification, Instrumental
  - K-12 Certification, Keyboard
- Nursing
  - Prelicensure
  - RN to BSN Completion
- Paralegal Studies
- Physical Education,
  - K-12 Teacher Certification
- Political Science
  - Public Administration
- Psychology
- Public Health
  - Genetic Health Studies
- Sociology
- Spanish
  - Special Education
- Visual Art
  - 2D Studio
  - 3D Studio
  - K-12 Teacher Certification

**Minors**

- Art History
- Biology
- Business Administration
- Ceramics
- Chemistry
- Child & Family Studies
- Computer Information Systems
- Criminal Justice
- Cybersecurity
- Data Science
- Design
- English
- Entrepreneurship
- Environmental Science
- Esports Management & Administration
- European Studies
- Forensic Science
- Film Studies
- French
- General Studio Art
- Health Care Management
- History
- Homeland Security
- Human Services
- Information Technology
- International Business
- International Studies
- Mathematics
- Media & Communication
- Media Writing
- Military Science & Leadership
- Music
- Music History
- Non-Profit Management
- Painting & Drawing
- Philosophy
- Photography
- Political Science
- Pre-Law
- Pre-Social Work
- Psychology
- Public Administration
- Public Health
- Public Relations
- Religion
- Sculpture
- Sociology
- Spanish
- Speech & Performance
- Sports Management
- Sports Media
- Therapeutic Horsemanship
- Writing

**Pre-Professional Studies**

- Pre-Athletic Training
- Pre-Dentistry
- Pre-Medicine
- Pre-Occupational Therapy
- Pre-Optometry
- Pre-Pharmacy
- Pre-Physical Therapy
- Pre-Physician Assistant
- Pre-Veterinary Medicine

# LAUNCH LANDER

YOUR FUTURE WITH



YOUR STATE UNIVERSITY IN GREENWOOD, S.C.

**Frozen Tuition**

**\$11,700**

**UNDERGRADUATE IN-STATE, FULL-TIME TUITION & GENERAL FEES**

While Lander is rapidly growing, one thing that's not increasing is the cost to attend.



**A PERFECT FIT**

**4,200**

APPROX. STUDENT BODY SIZE, WITH AN AVERAGE CLASS SIZE OF 20

**CAREER FOCUSED**

**60+**

NUMBER OF EMPLOYER RECRUITING AND GRADUATE SCHOOL REPS VISITING LANDER EACH YEAR

**RELEVANT NOW**

**90+**

AREAS OF STUDY AND MARKET-DRIVEN PROGRAMS IN TODAY'S MOST IN-DEMAND FIELDS

**FOUNDED**

**1872**

FOUR-YEAR, PUBLIC, COEDUCATIONAL UNIVERSITY—ONE OF SOUTH CAROLINA'S OLDEST INSTITUTIONS OF HIGHER EDUCATION

You've envisioned it before.

Your future.

It's big, and it's bold.

Because that's what your potential demands.

Now, it's time to make it happen.

At Lander University,

the best way to launch big, bold futures...

*is together.*

**Our Promise to You**

You'll find employment in your field within 60 days of graduation, or Lander will hire you as a graduate assistant and guarantee your acceptance into the Lander graduate program of your choice.\* As a graduate assistant, you will save 50% on graduate tuition and receive a \$6,000 stipend per year—that's Lander's commencement-to-career promise.

\*To qualify, students must graduate from Lander in four years with at least a 3.0 GPA. Offer begins for Class of 2025. Additional admissions requirements may apply for specific graduate programs.



**Visit Campus!**

Scan here to schedule your tour or visit online at [lander.edu/visit](http://lander.edu/visit).

Daily Tours M-F, 10:00 a.m. & 2:00 p.m.



320 Stanley Avenue | Greenwood, SC 29649  
1-888-4LANDER | 864-388-8307  
[admissions@lander.edu](mailto:admissions@lander.edu) | [lander.edu](http://lander.edu)

For a complete list of academic programs, please visit: [lander.edu/majors-minors](http://lander.edu/majors-minors)

Lander University provides equal access and does not discriminate on the basis of race, color, sex, sexual orientation, religion, national origin, pregnancy, gender, gender identity, gender expression, genetic information, disability or age in its programs and activities. For further information on Lander's notice of nondiscrimination, visit [lander.edu/titleix](http://lander.edu/titleix) and [lander.edu/non-discrimination](http://lander.edu/non-discrimination).

**Majors**

- Biology
  - Genetics
- Business Administration (BAS)
- Accounting
- Financial Services
- Health Care Management
- Hospitality Management
- IT Management
- Management/Marketing
- Sports Management
- Chemistry
  - Dual Engineering
  - Forensic Science
  - Health Sciences
  - Secondary Certification
- Computer Information Systems
  - Dual Engineering
  - Networking
  - Software Development
- Criminology
- Cybersecurity
  - Computer Information Systems
  - Political Science
- Data Science
  - Business Analytics
  - Computer Information Systems
  - Mathematics
- Digital Media Production
- Early Childhood Education
  - Montessori
- Elementary Education
- English
  - Creative Writing
  - Professional Writing
  - Secondary Teacher Certification
- Entrepreneurship
- Environmental Science
  - Forensic Science
- Exercise Science
- Fitness & Wellness
- Graphic Design
- History
  - Public History
  - Secondary Social Studies Teacher Certification
- Human Services
- Humanities
- Interdisciplinary Studies
- Allied Health Studies
- Educational Psychology for Special Populations
- Environmental Health
- Equine-Assisted Activities & Therapies
- Financial Services & Public Relations
- Graphic Design & Marketing
- Health Promotion & Wellness: Behavioral Health
- Health Promotion & Wellness: Healthcare Management
- Health Promotion & Wellness: Human Services
- Health Promotion & Wellness: Policy
- International Environment & Sustainability Management, Public Relations
- Studies in Early Childhood Education & Psychology
- Studies in Early Childhood with Special Needs
- Teaching & Learning for Diverse Elementary Students (Reading/Media)

**Minors**

- Art History
- Biology
- Business Administration
- Ceramics
- Chemistry
- Child & Family Studies
- Computer Information Systems
- Criminal Justice
- Cybersecurity
- Data Science
- Design
- English
- Entrepreneurship
- Environmental Science
- Esports Management & Administration
- European Studies
- Forensic Science
- Film Studies
- French
- General Studio Art
- Health Care Management
- History
- Homeland Security
- Human Services
- Information Technology
- International Business
- International Studies
- Mathematics
- Media & Communication
- Media Writing
- Military Science & Leadership
- Music
- Music History
- Non-Profit Management
- Painting & Drawing
- Philosophy
- Photography
- Political Science
- Pre-Law
- Pre-Social Work
- Psychology
- Public Administration
- Public Health
- Public Relations
- Religion
- Sculpture
- Sociology
- Spanish
- Speech & Performance
- Sports Management
- Sports Media
- Therapeutic Horsemanship
- Writing

**Pre-Professional Studies**

- Pre-Athletic Training
- Pre-Dentistry
- Pre-Medicine
- Pre-Occupational Therapy
- Pre-Optometry
- Pre-Pharmacy
- Pre-Physical Therapy
- Pre-Physician Assistant
- Pre-Veterinary Medicine

- Paralegal Studies
- Physical Education, K-12 Teacher Certification
- Political Science
  - Public Administration
- Psychology
- Public Health
  - Genetic Health Studies
- Sociology
- Spanish
- Special Education
- Visual Art
  - 2D Studio
  - 3D Studio
  - K-12 Teacher Certification

# LAUNCH YOUR FUTURE WITH LANDER



YOUR STATE UNIVERSITY IN GREENWOOD, S.C.

**Frozen Tuition**

**\$11,700**

**UNDERGRADUATE IN-STATE, FULL-TIME TUITION & GENERAL FEES**

While Lander is rapidly growing, one thing that's not increasing is the cost to attend.

**A PERFECT FIT**

**4,200**

APPROX. STUDENT BODY SIZE, WITH AN AVERAGE CLASS SIZE OF 20

**RELEVANT NOW**

**90+**

AREAS OF STUDY & MARKET-DRIVEN PROGRAMS IN TODAY'S MOST IN-DEMAND FIELDS

**CAREER FOCUSED**

**60+**

NUMBER OF EMPLOYER RECRUITING AND GRADUATE SCHOOL REPS VISITING LANDER EACH YEAR

**FOUNDED**

**1872**

FOUR-YEAR, PUBLIC, COEDUCATIONAL UNIVERSITY—ONE OF SOUTH CAROLINA'S OLDEST INSTITUTIONS OF HIGHER EDUCATION

You've envisioned it before.

Your future.

It's big, and it's bold.

Because that's what your potential demands.

Now, it's time to make it happen.

At Lander University, the best way to launch big, bold futures... *is together.*

**Our Promise to You**

You'll find employment in your field within 60 days of graduation, or Lander will hire you as a graduate assistant and guarantee your acceptance into the Lander graduate program of your choice.\* As a graduate assistant, you will save 50% on graduate tuition and receive a \$6,000 stipend per year—that's Lander's commencement-to-career promise.

\*To qualify, students must graduate from Lander in four years with at least a 3.0 GPA. Offer begins for Class of 2025. Additional admissions requirements may apply for specific graduate programs.



**Visit Campus!**

Scan here to schedule your tour or visit online at [lander.edu/visit](http://lander.edu/visit).

Daily Tours M-F, 10:00 a.m. & 2:00 p.m.



320 Stanley Avenue | Greenwood, SC 29649  
1-888-4LANDER | 864-388-8307  
[admissions@lander.edu](mailto:admissions@lander.edu) | [lander.edu](http://lander.edu)

For a complete list of academic programs, please visit: [lander.edu/majors-minors](http://lander.edu/majors-minors)

Lander University provides equal access and does not discriminate on the basis of race, color, sex, sexual orientation, religion, national origin, pregnancy, gender, gender identity, gender expression, genetic information, disability or age in its programs and activities. For further information on Lander's notice of nondiscrimination, visit [lander.edu/titleix](http://lander.edu/titleix) and [lander.edu/non-discrimination](http://lander.edu/non-discrimination).

**Majors**

Biology  
Genetics  
Business Administration (BAS)  
Business Administration  
Accounting  
Financial Services  
Health Care Management  
Hospitality Management  
IT Management  
Management/Marketing  
Sports Management

**Chemistry**

Dual Engineering  
Forensic Science  
Health Sciences  
Secondary Certification  
Computer Information Systems  
Dual Engineering  
Networking  
Software Development

**Criminology**

Cybersecurity  
Computer Information Systems  
Political Science  
Data Science  
Business Analytics  
Computer Information Systems  
Mathematics

**Digital Media Production**

Early Childhood Education  
Montessori

**Elementary Education**

English  
Creative Writing  
Professional Writing  
Secondary Teacher Certification

**Entrepreneurship**

Environmental Science  
Forensic Science  
Exercise Science  
Fitness & Wellness  
Graphic Design  
History  
Public History  
Secondary Social Studies Teacher Certification

**Human Services**

Humanities  
Interdisciplinary Studies  
Allied Health Studies  
Educational Psychology for Special Populations  
Environmental Health  
Equine-Assisted Activities & Therapies  
Financial Services & Public Relations  
Graphic Design & Marketing  
Health Promotion & Wellness: Behavioral Health  
Health Promotion & Wellness: Healthcare Management  
Health Promotion & Wellness: Human Services  
Health Promotion & Wellness: Policy

**International Studies**

International Environment & Sustainability  
Management, Public Relations  
Studies in Early Childhood Education & Psychology  
Studies in Early Childhood with Special Needs  
Teaching & Learning for Diverse Elementary Students (Reading/Media)

**International Studies**

Mathematics  
Dual Engineering  
Secondary Teacher Certification  
Media & Communication  
Medical Biology  
Middle Level Education

**Music**

Instrumental  
Keyboard  
Vocal  
K-12 Certification, Choral  
K-12 Certification, Instrumental  
K-12 Certification, Keyboard

**Nursing**

Prelicensure  
RN to BSN Completion

Paralegal Studies  
Physical Education,  
K-12 Teacher Certification

**Political Science**

Public Administration  
Psychology  
Public Health  
Genetic Health Studies  
Sociology  
Spanish  
Special Education

**Visual Art**

2D Studio  
3D Studio  
K-12 Teacher Certification

**Minors**

Art History  
Biology  
Business Administration  
Ceramics  
Chemistry  
Child & Family Studies  
Computer Information Systems  
Criminal Justice  
Cybersecurity  
Data Science  
Design  
English  
Entrepreneurship  
Environmental Science  
Esports Management & Administration  
European Studies  
Forensic Science  
Film Studies  
French  
General Studio Art  
Health Care Management  
History  
Homeland Security  
Human Services  
Information Technology  
International Business  
International Studies  
Mathematics  
Media & Communication  
Media Writing  
Military Science & Leadership  
Music  
Music History  
Non-Profit Management  
Painting & Drawing  
Philosophy  
Photography  
Political Science  
Pre-Law  
Pre-Social Work  
Psychology  
Public Administration  
Public Health  
Public Relations  
Religion  
Sculpture  
Sociology  
Spanish  
Speech & Performance  
Sports Management  
Sports Media  
Therapeutic Horsemanship  
Writing

**Pre-Professional Studies**

Pre-Athletic Training  
Pre-Dentistry  
Pre-Medicine  
Pre-Occupational Therapy  
Pre-Optometry  
Pre-Pharmacy  
Pre-Physical Therapy  
Pre-Physician Assistant  
Pre-Veterinary Medicine

# LAUNCH LANDER

YOUR FUTURE WITH



YOUR STATE UNIVERSITY IN GREENWOOD, S.C.

**Frozen Tuition**

**\$11,700**

UNDERGRADUATE IN-STATE, FULL-TIME TUITION & GENERAL FEES

While Lander is rapidly growing, one thing that's not increasing is the cost to attend.

**A PERFECT FIT**

**4,200**

APPROX. STUDENT BODY SIZE, WITH AN AVERAGE CLASS SIZE OF 20

**RELEVANT NOW**

**90+**

AREAS OF STUDY & MARKET-DRIVEN PROGRAMS IN TODAY'S MOST IN-DEMAND FIELDS

**FOUNDED**

**1872**

FOUR-YEAR, PUBLIC, COEDUCATIONAL UNIVERSITY—ONE OF SOUTH CAROLINA'S OLDEST INSTITUTIONS OF HIGHER EDUCATION

**CAREER FOCUSED**

**60+**

NUMBER OF EMPLOYER RECRUITING AND GRADUATE SCHOOL REPS VISITING LANDER EACH YEAR

You've envisioned it before.

Your future.

It's big, and it's bold.

Because that's what your potential demands.

Now, it's time to make it happen.

At Lander University,

the best way to launch big, bold futures...

is together.

**Our Promise to You**

You'll find employment in your field within 60 days of graduation, or Lander will hire you as a graduate assistant and guarantee your acceptance into the Lander graduate program of your choice.\* As a graduate assistant, you will save 50% on graduate tuition and receive a \$6,000 stipend per year—that's Lander's commencement-to-career promise.

\*To qualify, students must graduate from Lander in four years with at least a 3.0 GPA. Offer begins for Class of 2025. Additional admissions requirements may apply for specific graduate programs.



**Visit Campus!**

Scan here to schedule your tour or visit online at [lander.edu/visit](http://lander.edu/visit).

Daily Tours M-F, 10:00 a.m. & 2:00 p.m.

**Majors**

- Biology
  - Genetics
- Business Administration (BAS)
  - Accounting
  - Financial Services
  - Health Care Management
  - Hospitality Management
  - IT Management
  - Management/Marketing
  - Sports Management
- Chemistry
  - Dual Engineering
  - Forensic Science
  - Health Sciences
  - Secondary Certification
- Computer Information Systems
  - Dual Engineering
  - Networking
  - Software Development
- Criminology
- Cybersecurity
  - Computer Information Systems
  - Political Science
- Data Science
  - Business Analytics
  - Computer Information Systems
  - Mathematics
- Digital Media Production
- Early Childhood Education
  - Montessori
- Elementary Education
- English
  - Creative Writing
  - Professional Writing
  - Secondary Teacher Certification
- Entrepreneurship
- Environmental Science
  - Forensic Science
- Exercise Science
- Fitness & Wellness
- Graphic Design
- History
  - Public History
  - Secondary Social Studies Teacher Certification
- Human Services
- Humanities
- Interdisciplinary Studies
  - Allied Health Studies
  - Educational Psychology for Special Populations
  - Environmental Health
  - Equine-Assisted Activities & Therapies
  - Financial Services & Public Relations
  - Graphic Design & Marketing
  - Health Promotion & Wellness: Behavioral Health
  - Health Promotion & Wellness: Healthcare Management
  - Health Promotion & Wellness: Human Services
  - Health Promotion & Wellness: Policy
  - International Environment & Sustainability Management, Public Relations
  - Studies in Early Childhood Education & Psychology
  - Studies in Early Childhood with Special Needs
  - Teaching & Learning for Diverse Elementary Students (Reading/Media)
- International Studies
- Mathematics
  - Dual Engineering
  - Secondary Teacher Certification
- Media & Communication
- Medical Biology
- Middle Level Education
- Music
  - Instrumental
  - Keyboard
  - Vocal
  - K-12 Certification, Choral
  - K-12 Certification, Instrumental
  - K-12 Certification, Keyboard
- Nursing
  - Prelicensure
  - RN to BSN Completion
- Paralegal Studies
- Physical Education,
  - K-12 Teacher Certification
- Political Science
  - Public Administration
- Psychology
- Public Health
  - Genetic Health Studies
- Sociology
- Spanish
  - Special Education
- Visual Art
  - 2D Studio
  - 3D Studio
  - K-12 Teacher Certification

**Minors**

- Art History
- Biology
- Business Administration
- Ceramics
- Chemistry
- Child & Family Studies
- Computer Information Systems
- Criminal Justice
- Cybersecurity
- Data Science
- Design
- English
- Entrepreneurship
- Environmental Science
- Esports Management & Administration
- European Studies
- Forensic Science
- Film Studies
- French
- General Studio Art
- Health Care Management
- History
- Homeland Security
- Human Services
- Information Technology
- International Business
- International Studies
- Mathematics
- Media & Communication
- Media Writing
- Military Science & Leadership
- Music
- Music History
- Non-Profit Management
- Painting & Drawing
- Philosophy
- Photography
- Political Science
- Pre-Law
- Pre-Social Work
- Psychology
- Public Administration
- Public Health
- Public Relations
- Religion
- Sculpture
- Sociology
- Spanish
- Speech & Performance
- Sports Management
- Sports Media
- Therapeutic Horsemanship
- Writing

**Pre-Professional Studies**

- Pre-Athletic Training
- Pre-Dentistry
- Pre-Medicine
- Pre-Occupational Therapy
- Pre-Optometry
- Pre-Pharmacy
- Pre-Physical Therapy
- Pre-Physician Assistant
- Pre-Veterinary Medicine

# LAUNCH YOUR FUTURE WITH LANDER



YOUR STATE UNIVERSITY IN GREENWOOD, S.C.

**Frozen Tuition**

**\$11,700**

**UNDERGRADUATE IN-STATE, FULL-TIME TUITION & GENERAL FEES**

While Lander is rapidly growing, one thing that's not increasing is the cost to attend.

**RELEVANT NOW**

**90+**

AREAS OF STUDY & MARKET-DRIVEN PROGRAMS IN TODAY'S MOST IN-DEMAND FIELDS

**CAREER FOCUSED**

**60+**

NUMBER OF EMPLOYER RECRUITING AND GRADUATE SCHOOL REPS VISITING LANDER EACH YEAR

**FOUNDED**

**1872**

FOUR-YEAR, PUBLIC, COEDUCATIONAL UNIVERSITY—ONE OF SOUTH CAROLINA'S OLDEST INSTITUTIONS OF HIGHER EDUCATION

**A PERFECT FIT**

**4,200**

APPROX. STUDENT BODY SIZE, WITH AN AVERAGE CLASS SIZE OF 20

You've envisioned it before.

Your future.

It's big, and it's bold.

Because that's what your potential demands.

Now, it's time to make it happen.

At Lander University,

the best way to launch big, bold futures...

*is together.*

**Our Promise to You**

You'll find employment in your field within 60 days of graduation, or Lander will hire you as a graduate assistant and guarantee your acceptance into the Lander graduate program of your choice.\* As a graduate assistant, you will save 50% on graduate tuition and receive a \$6,000 stipend per year—that's Lander's commencement-to-career promise.

For a complete list of academic programs, please visit: [lander.edu/majors-minors](http://lander.edu/majors-minors)

Lander University provides equal access and does not discriminate on the basis of race, color, sex, sexual orientation, religion, national origin, pregnancy, gender, gender identity, gender expression, genetic information, disability or age in its programs and activities. For further information on Lander's notice of nondiscrimination, visit [lander.edu/titleix](http://lander.edu/titleix) and [lander.edu/non-discrimination](http://lander.edu/non-discrimination).

\*To qualify, students must graduate from Lander in four years with at least a 3.0 GPA. Offer begins for Class of 2025. Additional admissions requirements may apply for specific graduate programs.



**Visit Campus!**

Scan here to schedule your tour or visit online at [lander.edu/visit](http://lander.edu/visit).

**Daily Tours** M-F, 10:00 a.m. & 2:00 p.m.



320 Stanley Avenue | Greenwood, SC 29649  
 1-888-4LANDER | 864-388-8307  
[admissions@lander.edu](mailto:admissions@lander.edu) | [lander.edu](http://lander.edu)

For a complete list of academic programs, please visit: [lander.edu/majors-minors](http://lander.edu/majors-minors)

Lander University provides equal access and does not discriminate on the basis of race, color, sex, sexual orientation, religion, national origin, pregnancy, gender, gender identity, gender expression, genetic information, disability or age in its programs and activities. For further information on Lander's notice of nondiscrimination, visit [lander.edu/titleix](http://lander.edu/titleix) and [lander.edu/non-discrimination](http://lander.edu/non-discrimination).

**Majors**

- Biology
  - Genetics
- Business Administration (BAS)
  - Accounting
  - Financial Services
  - Health Care Management
  - Hospitality Management
  - IT Management
  - Management/Marketing
  - Sports Management
- Chemistry
  - Dual Engineering
  - Forensic Science
  - Health Sciences
  - Secondary Certification
- Computer Information Systems
  - Dual Engineering
  - Networking
  - Software Development
- Criminology
- Cybersecurity
  - Computer Information Systems
  - Political Science
- Data Science
  - Business Analytics
  - Computer Information Systems
  - Mathematics
- Digital Media Production
- Early Childhood Education
  - Montessori
- Elementary Education
- English
  - Creative Writing
  - Professional Writing
  - Secondary Teacher Certification
- Entrepreneurship
- Environmental Science
  - Forensic Science
- Exercise Science
- Fitness & Wellness
- Graphic Design
- History
  - Public History
  - Secondary Social Studies Teacher Certification
- Human Services
- Humanities
- Interdisciplinary Studies
  - Allied Health Studies
  - Educational Psychology for Special Populations
  - Environmental Health
  - Equine-Assisted Activities & Therapies
  - Financial Services & Public Relations
  - Graphic Design & Marketing
  - Health Promotion & Wellness: Behavioral Health
  - Health Promotion & Wellness: Healthcare Management
  - Health Promotion & Wellness: Human Services
  - Health Promotion & Wellness: Policy
  - International Environment & Sustainability Management, Public Relations
  - Studies in Early Childhood Education & Psychology
  - Studies in Early Childhood with Special Needs
  - Teaching & Learning for Diverse Elementary Students (Reading/Media)
- International Studies
- Mathematics
  - Dual Engineering
  - Secondary Teacher Certification
- Media & Communication
  - Medical Biology
  - Middle Level Education
- Music
  - Instrumental
  - Keyboard
  - Vocal
  - K-12 Certification, Choral
  - K-12 Certification, Instrumental
  - K-12 Certification, Keyboard
- Nursing
  - Prelicensure
  - RN to BSN Completion
- Paralegal Studies
- Physical Education,
  - K-12 Teacher Certification
- Political Science
  - Public Administration
- Psychology
  - Public Health
  - Genetic Health Studies
- Sociology
  - Spanish
- Special Education
- Visual Art
  - 2D Studio
  - 3D Studio
  - K-12 Teacher Certification

**Minors**

- Art History
- Biology
- Business Administration
- Ceramics
- Chemistry
- Child & Family Studies
- Computer Information Systems
- Criminal Justice
- Cybersecurity
- Data Science
- Design
- English
- Entrepreneurship
- Environmental Science
- Esports Management & Administration
- European Studies
- Forensic Science
- Film Studies
- French
- General Studio Art
- Health Care Management
- History
- Homeland Security
- Human Services
- Information Technology
- International Business
- International Studies
- Mathematics
- Media & Communication
- Media Writing
- Military Science & Leadership
- Music
- Music History
- Non-Profit Management
- Painting & Drawing
- Philosophy
- Photography
- Political Science
- Pre-Law
- Pre-Social Work
- Psychology
- Public Administration
- Public Health
- Public Relations
- Religion
- Sculpture
- Sociology
- Spanish
- Speech & Performance
- Sports Management
- Sports Media
- Therapeutic Horsemanship
- Writing

**Pre-Professional Studies**

- Pre-Athletic Training
- Pre-Dentistry
- Pre-Medicine
- Pre-Occupational Therapy
- Pre-Optometry
- Pre-Pharmacy
- Pre-Physical Therapy
- Pre-Physician Assistant
- Pre-Veterinary Medicine

# LAUNCH LANDER

YOUR FUTURE WITH



YOUR STATE UNIVERSITY IN GREENWOOD, S.C.

**Frozen Tuition**  
**\$11,700**

**UNDERGRADUATE IN-STATE, FULL-TIME TUITION & GENERAL FEES**  
 While Lander is rapidly growing, one thing that's not increasing is the cost to attend.

**A PERFECT FIT**  
**4,200**

APPROX. STUDENT BODY SIZE, WITH AN AVERAGE CLASS SIZE OF 20

**RELEVANT NOW**  
**90+**

AREAS OF STUDY & MARKET-DRIVEN PROGRAMS IN TODAY'S MOST IN-DEMAND FIELDS

**CAREER FOCUSED**  
**60+**

NUMBER OF EMPLOYER RECRUITING AND GRADUATE SCHOOL REPS VISITING LANDER EACH YEAR

**FOUNDED**  
**1872**

FOUR-YEAR, PUBLIC, COEDUCATIONAL UNIVERSITY—ONE OF SOUTH CAROLINA'S OLDEST INSTITUTIONS OF HIGHER EDUCATION

You've envisioned it before.

Your future.

It's big, and it's bold.

Because that's what your potential demands.

Now, it's time to make it happen.

At Lander University,

the best way to launch big, bold futures...

*is together.*

**Our Promise to You**

You'll find employment in your field within 60 days of graduation, or Lander will hire you as a graduate assistant and guarantee your acceptance into the Lander graduate program of your choice.\* As a graduate assistant, you will save 50% on graduate tuition and receive a \$6,000 stipend per year—that's Lander's commencement-to-career promise.

\*To qualify, students must graduate from Lander in four years with at least a 3.0 GPA. Offer begins for Class of 2025. Additional admissions requirements may apply for specific graduate programs.



**Visit Campus!**

Scan here to schedule your tour or visit online at [lander.edu/visit](http://lander.edu/visit).

**Daily Tours** M-F, 10:00 a.m. & 2:00 p.m.



320 Stanley Avenue | Greenwood, SC 29649  
1-888-4LANDER | 864-388-8307  
[admissions@lander.edu](mailto:admissions@lander.edu) | [lander.edu](http://lander.edu)

For a complete list of academic programs, please visit: [lander.edu/majors-minors](http://lander.edu/majors-minors)

Lander University provides equal access and does not discriminate on the basis of race, color, sex, sexual orientation, religion, national origin, pregnancy, gender, gender identity, gender expression, genetic information, disability or age in its programs and activities. For further information on Lander's notice of nondiscrimination, visit [lander.edu/titleix](http://lander.edu/titleix) and [lander.edu/non-discrimination](http://lander.edu/non-discrimination).

**Majors**

- Biology
  - Genetics
- Business Administration (BAS)
  - Accounting
  - Financial Services
  - Health Care Management
  - Hospitality Management
  - IT Management
  - Management/Marketing
  - Sports Management
- Chemistry
  - Dual Engineering
  - Forensic Science
  - Health Sciences
  - Secondary Certification
- Computer Information Systems
  - Dual Engineering
  - Networking
  - Software Development
- Criminology
- Cybersecurity
  - Computer Information Systems
  - Political Science
- Data Science
  - Business Analytics
  - Computer Information Systems
  - Mathematics
- Digital Media Production
- Early Childhood Education
  - Montessori
- Elementary Education
  - English
    - Creative Writing
    - Professional Writing
    - Secondary Teacher Certification
- Entrepreneurship
- Environmental Science
  - Forensic Science
- Exercise Science
- Fitness & Wellness
- Graphic Design
- History
  - Public History
  - Secondary Social Studies Teacher Certification
- Human Services
- Humanities
- Interdisciplinary Studies
  - Allied Health Studies
  - Educational Psychology for Special Populations
  - Environmental Health
  - Equine-Assisted Activities & Therapies
  - Financial Services & Public Relations
  - Graphic Design & Marketing
  - Health Promotion & Wellness: Behavioral Health
  - Health Promotion & Wellness: Healthcare Management
  - Health Promotion & Wellness: Human Services
  - Health Promotion & Wellness: Policy
  - International Environment & Sustainability Management, Public Relations
  - Studies in Early Childhood Education & Psychology
  - Studies in Early Childhood with Special Needs
  - Teaching & Learning for Diverse Elementary Students (Reading/Media)
- International Studies
- Mathematics
  - Dual Engineering
  - Secondary Teacher Certification
- Media & Communication
- Medical Biology
- Middle Level Education
- Music
  - Instrumental
  - Keyboard
  - Vocal
  - K-12 Certification, Choral
  - K-12 Certification, Instrumental
  - K-12 Certification, Keyboard
- Nursing
  - Prelicensure
  - RN to BSN Completion
- Paralegal Studies
- Physical Education,
  - K-12 Teacher Certification
- Political Science
  - Public Administration
- Psychology
  - Public Health
  - Genetic Health Studies
- Sociology
- Spanish
  - Special Education
- Visual Art
  - 2D Studio
  - 3D Studio
  - K-12 Teacher Certification

**Minors**

- Art History
- Biology
- Business Administration
- Ceramics
- Chemistry
- Child & Family Studies
- Computer Information Systems
- Criminal Justice
- Cybersecurity
- Data Science
- Design
- English
- Entrepreneurship
- Environmental Science
- Esports Management & Administration
- European Studies
- Forensic Science
- Film Studies
- French
- General Studio Art
- Health Care Management
- History
- Homeland Security
- Human Services
- Information Technology
- International Business
- International Studies
- Mathematics
- Media & Communication
- Media Writing
- Military Science & Leadership
- Music
- Music History
- Non-Profit Management
- Painting & Drawing
- Philosophy
- Photography
- Political Science
- Pre-Law
- Pre-Social Work
- Psychology
- Public Administration
- Public Health
- Public Relations
- Religion
- Sculpture
- Sociology
- Spanish
- Speech & Performance
- Sports Management
- Sports Media
- Therapeutic Horsemanship
- Writing


**Pre-Professional Studies**

- Pre-Athletic Training
- Pre-Dentistry
- Pre-Medicine
- Pre-Occupational Therapy
- Pre-Optometry
- Pre-Pharmacy
- Pre-Physical Therapy
- Pre-Physician Assistant
- Pre-Veterinary Medicine

# LAUNCH YOUR FUTURE WITH LANDER




YOUR STATE UNIVERSITY IN GREENWOOD, S.C.

**Frozen Tuition**  **UNDERGRADUATE IN-STATE, FULL-TIME TUITION & GENERAL FEES**  
**\$11,700** While Lander is rapidly growing, one thing that's not increasing is the cost to attend.

**CAREER FOCUSED**  **60+**  
 NUMBER OF EMPLOYER RECRUITING AND GRADUATE SCHOOL REPS VISITING LANDER EACH YEAR

**A PERFECT FIT**  **4,200**  
 APPROX. STUDENT BODY SIZE, WITH AN AVERAGE CLASS SIZE OF 20

**FOUNDED**  **1872**  
 FOUR-YEAR, PUBLIC, COEDUCATIONAL UNIVERSITY—ONE OF SOUTH CAROLINA'S OLDEST INSTITUTIONS OF HIGHER EDUCATION

**RELEVANT NOW**  **90+**  
 AREAS OF STUDY & MARKET-DRIVEN PROGRAMS IN TODAY'S MOST IN-DEMAND FIELDS

You've envisioned it before.

Your future.

It's big, and it's bold.

Because that's what your potential demands.

Now, it's time to make it happen.

At Lander University,

the best way to launch big, bold futures...

*is together.*

**Our Promise to You** 

You'll find employment in your field within 60 days of graduation, or Lander will hire you as a graduate assistant and guarantee your acceptance into the Lander graduate program of your choice.\* As a graduate assistant, you will save 50% on graduate tuition and receive a \$6,000 stipend per year—that's Lander's commencement-to-career promise.

\*To qualify, students must graduate from Lander in four years with at least a 3.0 GPA. Offer begins for Class of 2025. Additional admissions requirements may apply for specific graduate programs.





**Visit Campus!**

Scan here to schedule your tour or visit online at [lander.edu/visit](http://lander.edu/visit).

Daily Tours M-F, 10:00 a.m. & 2:00 p.m.



320 Stanley Avenue | Greenwood, SC 29649  
 1-888-4LANDER | 864-388-8307  
[admissions@lander.edu](mailto:admissions@lander.edu) | [lander.edu](http://lander.edu)

For a complete list of academic programs, please visit: [lander.edu/majors-minors](http://lander.edu/majors-minors)

Lander University provides equal access and does not discriminate on the basis of race, color, sex, sexual orientation, religion, national origin, pregnancy, gender, gender identity, gender expression, genetic information, disability or age in its programs and activities. For further information on Lander's notice of nondiscrimination, visit [lander.edu/titleix](http://lander.edu/titleix) and [lander.edu/non-discrimination](http://lander.edu/non-discrimination).

**Majors**

- Biology
  - Genetics
- Business Administration (BAS)
  - Accounting
  - Financial Services
  - Health Care Management
  - Hospitality Management
  - IT Management
  - Management/Marketing
  - Sports Management
- Chemistry
  - Dual Engineering
  - Forensic Science
  - Health Sciences
  - Secondary Certification
- Computer Information Systems
  - Dual Engineering
  - Networking
  - Software Development
- Criminology
- Cybersecurity
  - Computer Information Systems
  - Political Science
- Data Science
  - Business Analytics
  - Computer Information Systems
  - Mathematics
- Digital Media Production
- Early Childhood Education
  - Montessori
- Elementary Education
- English
  - Creative Writing
  - Professional Writing
  - Secondary Teacher Certification
- Entrepreneurship
- Environmental Science
  - Forensic Science
- Exercise Science
- Fitness & Wellness
- Graphic Design
- History
  - Public History
  - Secondary Social Studies Teacher Certification
- Human Services
- Humanities
- Interdisciplinary Studies
  - Allied Health Studies
  - Educational Psychology for Special Populations
  - Environmental Health
  - Equine-Assisted Activities & Therapies
  - Financial Services & Public Relations
  - Graphic Design & Marketing
  - Health Promotion & Wellness: Behavioral Health
  - Health Promotion & Wellness: Healthcare Management
  - Health Promotion & Wellness: Human Services
  - Health Promotion & Wellness: Policy
  - International Environment & Sustainability
  - Management, Public Relations
  - Studies in Early Childhood Education & Psychology
  - Studies in Early Childhood with Special Needs
  - Teaching & Learning for Diverse Elementary Students (Reading/Media)
- International Studies
- Mathematics
  - Dual Engineering
  - Secondary Teacher Certification
- Media & Communication
  - Medical Biology
  - Middle Level Education
- Music
  - Instrumental
  - Keyboard
  - Vocal
  - K-12 Certification, Choral
  - K-12 Certification, Instrumental
  - K-12 Certification, Keyboard
- Nursing
  - Preclicensure
  - RN to BSN Completion
- Paralegal Studies
- Physical Education,
  - K-12 Teacher Certification
- Political Science
  - Public Administration
- Psychology
  - Public Health
  - Genetic Health Studies
- Sociology
- Spanish
  - Special Education
- Visual Art
  - 2D Studio
  - 3D Studio
  - K-12 Teacher Certification

**Minors**

- Art History
- Biology
- Business Administration
- Ceramics
- Chemistry
- Child & Family Studies
- Computer Information Systems
- Criminal Justice
- Cybersecurity
- Data Science
- Design
- English
- Entrepreneurship
- Environmental Science
- Esports Management & Administration
- European Studies
- Forensic Science
- Film Studies
- French
- General Studio Art
- Health Care Management
- History
- Homeland Security
- Human Services
- Information Technology
- International Business
- International Studies
- Mathematics
- Media & Communication
- Media Writing
- Military Science & Leadership
- Music
- Music History
- Non-Profit Management
- Painting & Drawing
- Philosophy
- Photography
- Political Science
- Pre-Law
- Pre-Social Work
- Psychology
- Public Administration
- Public Health
- Public Relations
- Religion
- Sculpture
- Sociology
- Spanish
- Speech & Performance
- Sports Management
- Sports Media
- Therapeutic Horsemanship
- Writing

**Pre-Professional Studies**

- Pre-Athletic Training
- Pre-Dentistry
- Pre-Medicine
- Pre-Occupational Therapy
- Pre-Optometry
- Pre-Pharmacy
- Pre-Physical Therapy
- Pre-Physician Assistant
- Pre-Veterinary Medicine

# LAUNCH LANDER

YOUR FUTURE WITH



**Frozen Tuition**  **UNDERGRADUATE IN-STATE, FULL-TIME TUITION & GENERAL FEES**  
**\$11,700** While Lander is rapidly growing, one thing that's not increasing is the cost to attend.

**A PERFECT FIT**   
**4,200**  
 APPROX. STUDENT BODY SIZE, WITH AN AVERAGE CLASS SIZE OF 20

**RELEVANT NOW**   
**90+**  
 AREAS OF STUDY AND MARKET-DRIVEN PROGRAMS IN TODAY'S MOST IN-DEMAND FIELDS

**CAREER FOCUSED**   
**60+**  
 NUMBER OF EMPLOYER RECRUITING AND GRADUATE SCHOOL REPS VISITING LANDER EACH YEAR

**FOUNDED**   
**1872**  
 FOUR-YEAR, PUBLIC, COEDUCATIONAL UNIVERSITY—ONE OF SOUTH CAROLINA'S OLDEST INSTITUTIONS OF HIGHER EDUCATION

You've envisioned it before.  
 Your future.

It's big, and it's bold.

Because that's what your potential demands.

Now, it's time to make it happen.

At Lander University,

the best way to launch big, bold futures...

*is together.*

**Our Promise to You** 

You'll find employment in your field within 60 days of graduation, or Lander will hire you as a graduate assistant and guarantee your acceptance into the Lander graduate program of your choice.\* As a graduate assistant, you will save 50% on graduate tuition and receive a \$6,000 stipend per year—that's Lander's commencement-to-career promise.

\*To qualify, students must graduate from Lander in four years with at least a 3.0 GPA. Offer begins for Class of 2025. Additional admissions requirements may apply for specific graduate programs.



**Visit Campus!**

Scan here to schedule your tour or visit online at [lander.edu/visit](http://lander.edu/visit).

Daily Tours M-F, 10:00 a.m. & 2:00 p.m.



320 Stanley Avenue | Greenwood, SC 29649  
 1-888-4LANDER | 864-388-8307  
[admissions@lander.edu](mailto:admissions@lander.edu) | [lander.edu](http://lander.edu)

For a complete list of academic programs, please visit: [lander.edu/majors-minors](http://lander.edu/majors-minors)

Lander University provides equal access and does not discriminate on the basis of race, color, sex, sexual orientation, religion, national origin, pregnancy, gender, gender identity, gender expression, genetic information, disability or age in its programs and activities. For further information on Lander's notice of nondiscrimination, visit [lander.edu/titleix](http://lander.edu/titleix) and [lander.edu/non-discrimination](http://lander.edu/non-discrimination).

**Majors**

- Biology
  - Genetics
- Business Administration (BAS)
- Business Administration
  - Accounting
  - Financial Services
  - Health Care Management
  - Hospitality Management
  - IT Management
  - Management/Marketing
  - Sports Management
- Chemistry
  - Dual Engineering
  - Forensic Science
  - Health Sciences
  - Secondary Certification
- Computer Information Systems
  - Dual Engineering
  - Networking
  - Software Development
- Criminology
- Cybersecurity
  - Computer Information Systems
  - Political Science
- Data Science
  - Business Analytics
  - Computer Information Systems
  - Mathematics
- Digital Media Production
- Early Childhood Education
  - Montessori
- Elementary Education
- English
  - Creative Writing
  - Professional Writing
  - Secondary Teacher Certification
- Entrepreneurship
- Environmental Science
  - Forensic Science
- Exercise Science
- Fitness & Wellness
- Graphic Design
- History
  - Public History
  - Secondary Social Studies Teacher Certification
- Human Services
- Humanities
- Interdisciplinary Studies
  - Allied Health Studies
  - Educational Psychology for Special Populations
  - Environmental Health
  - Equine-Assisted Activities & Therapies
  - Financial Services & Public Relations
  - Graphic Design & Marketing
  - Health Promotion & Wellness: Behavioral Health
  - Health Promotion & Wellness: Healthcare Management
  - Health Promotion & Wellness: Human Services
  - Health Promotion & Wellness: Policy
  - International Environment & Sustainability Management, Public Relations
  - Studies in Early Childhood Education & Psychology
  - Studies in Early Childhood Education with Special Needs
  - Teaching & Learning for Diverse Elementary Students (Reading/Media)
- International Studies
- Mathematics
  - Dual Engineering
  - Secondary Teacher Certification
- Media & Communication
- Medical Biology
- Middle Level Education
- Music
  - Instrumental
  - Keyboard
  - Vocal
  - K-12 Certification, Choral
  - K-12 Certification, Instrumental
  - K-12 Certification, Keyboard
- Nursing
  - Prelicensure
  - RN to BSN Completion
- Paralegal Studies
- Physical Education,
  - K-12 Teacher Certification
- Political Science
  - Public Administration
- Psychology
- Public Health
  - Genetic Health Studies
- Sociology
- Spanish
- Special Education
- Visual Art
  - 2D Studio
  - 3D Studio
  - K-12 Teacher Certification

**Minors**

- Art History
- Biology
- Business Administration
- Ceramics
- Chemistry
- Child & Family Studies
- Computer Information Systems
- Criminal Justice
- Cybersecurity
- Data Science
- Design
- English
- Entrepreneurship
- Environmental Science
- Esports Management & Administration
- European Studies
- Forensic Science
- Film Studies
- French
- General Studio Art
- Health Care Management
- History
- Homeland Security
- Human Services
- Information Technology
- International Business
- International Studies
- Mathematics
- Media & Communication
- Media Writing
- Military Science & Leadership
- Music
- Music History
- Non-Profit Management
- Painting & Drawing
- Philosophy
- Photography
- Political Science
- Pre-Law
- Pre-Social Work
- Psychology
- Public Administration
- Public Health
- Public Relations
- Religion
- Sculpture
- Sociology
- Spanish
- Speech & Performance
- Sports Management
- Sports Media
- Therapeutic Horsemanship
- Writing

**Pre-Professional Studies**

- Pre-Athletic Training
- Pre-Dentistry
- Pre-Medicine
- Pre-Occupational Therapy
- Pre-Optometry
- Pre-Pharmacy
- Pre-Physical Therapy
- Pre-Physician Assistant
- Pre-Veterinary Medicine

# LAUNCH YOUR FUTURE WITH LANDER



YOUR STATE UNIVERSITY IN GREENWOOD, S.C.

**Frozen Tuition**  
**\$11,700**

**UNDERGRADUATE IN-STATE, FULL-TIME TUITION & GENERAL FEES**  
 While Lander is rapidly growing, one thing that's not increasing is the cost to attend.

**A PERFECT FIT**

**4,200**  
 APPROX. STUDENT BODY SIZE, WITH AN AVERAGE CLASS SIZE OF 20

**RELEVANT NOW**

**90+**  
 AREAS OF STUDY & MARKET-DRIVEN PROGRAMS IN TODAY'S MOST IN-DEMAND FIELDS

**CAREER FOCUSED**

**60+**  
 NUMBER OF EMPLOYER RECRUITING AND GRADUATE SCHOOL REPS VISITING LANDER EACH YEAR

**FOUNDED**

**1872**  
 FOUR-YEAR, PUBLIC, COEDUCATIONAL UNIVERSITY—ONE OF SOUTH CAROLINA'S OLDEST INSTITUTIONS OF HIGHER EDUCATION

You've envisioned it before.

Your future.

It's big, and it's bold.

Because that's what your potential demands.

Now, it's time to make it happen.

At Lander University, the best way to launch big, bold futures...

*is together.*

**Our Promise to You**

You'll find employment in your field within 60 days of graduation, or Lander will hire you as a graduate assistant and guarantee your acceptance into the Lander graduate program of your choice.\* As a graduate assistant, you will save 50% on graduate tuition and receive a \$6,000 stipend per year—that's Lander's commencement-to-career promise.

\*To qualify, students must graduate from Lander in four years with at least a 3.0 GPA. Offer begins for Class of 2025. Additional admissions requirements may apply for specific graduate programs.



**Visit Campus!**

Scan here to schedule your tour or visit online at [lander.edu/visit](http://lander.edu/visit).

**Daily Tours** M-F, 10:00 a.m. & 2:00 p.m.



320 Stanley Avenue | Greenwood, SC 29649  
 1-888-4LANDER | 864-388-8307  
[admissions@lander.edu](mailto:admissions@lander.edu) | [lander.edu](http://lander.edu)

For a complete list of academic programs, please visit: [lander.edu/majors-minors](http://lander.edu/majors-minors)

Lander University provides equal access and does not discriminate on the basis of race, color, sex, sexual orientation, religion, national origin, pregnancy, gender, gender identity, gender expression, genetic information, disability or age in its programs and activities. For further information on Lander's notice of nondiscrimination, visit [lander.edu/titleix](http://lander.edu/titleix) and [lander.edu/non-discrimination](http://lander.edu/non-discrimination).

**Majors**

- Biology
  - Genetics
- Business Administration (BAS)
  - Accounting
  - Financial Services
  - Health Care Management
  - Hospitality Management
  - IT Management
  - Management/Marketing
  - Sports Management
- Chemistry
  - Dual Engineering
  - Forensic Science
  - Health Sciences
  - Secondary Certification
- Computer Information Systems
  - Dual Engineering
  - Networking
  - Software Development
- Criminology
- Cybersecurity
  - Computer Information Systems
  - Political Science
- Data Science
  - Business Analytics
  - Computer Information Systems
  - Mathematics
- Digital Media Production
- Early Childhood Education
  - Montessori
- Elementary Education
- English
  - Creative Writing
  - Professional Writing
  - Secondary Teacher Certification
- Entrepreneurship
- Environmental Science
  - Forensic Science
- Exercise Science
- Fitness & Wellness
- Graphic Design
- History
  - Public History
  - Secondary Social Studies Teacher Certification
- Human Services
- Humanities
- Interdisciplinary Studies
  - Allied Health Studies
  - Educational Psychology for Special Populations
  - Environmental Health
  - Equine-Assisted Activities & Therapies
  - Financial Services & Public Relations
  - Graphic Design & Marketing
  - Health Promotion & Wellness: Behavioral Health
  - Health Promotion & Wellness: Healthcare Management
  - Health Promotion & Wellness: Human Services
  - Health Promotion & Wellness: Policy
  - International Environment & Sustainability Management, Public Relations
  - Studies in Early Childhood Education & Psychology
  - Studies in Early Childhood with Special Needs
  - Teaching & Learning for Diverse Elementary Students (Reading/Media)
- International Studies
- Mathematics
  - Dual Engineering
  - Secondary Teacher Certification
- Media & Communication
- Medical Biology
- Middle Level Education
- Music
  - Instrumental
  - Keyboard
  - Vocal
  - K-12 Certification, Choral
  - K-12 Certification, Instrumental
  - K-12 Certification, Keyboard
- Nursing
  - Prelicensure
  - RN to BSN Completion
- Paralegal Studies
- Physical Education,
  - K-12 Teacher Certification
- Political Science
  - Public Administration
- Psychology
- Public Health
  - Genetic Health Studies
- Sociology
- Spanish
  - Special Education
- Visual Art
  - 2D Studio
  - 3D Studio
  - K-12 Teacher Certification

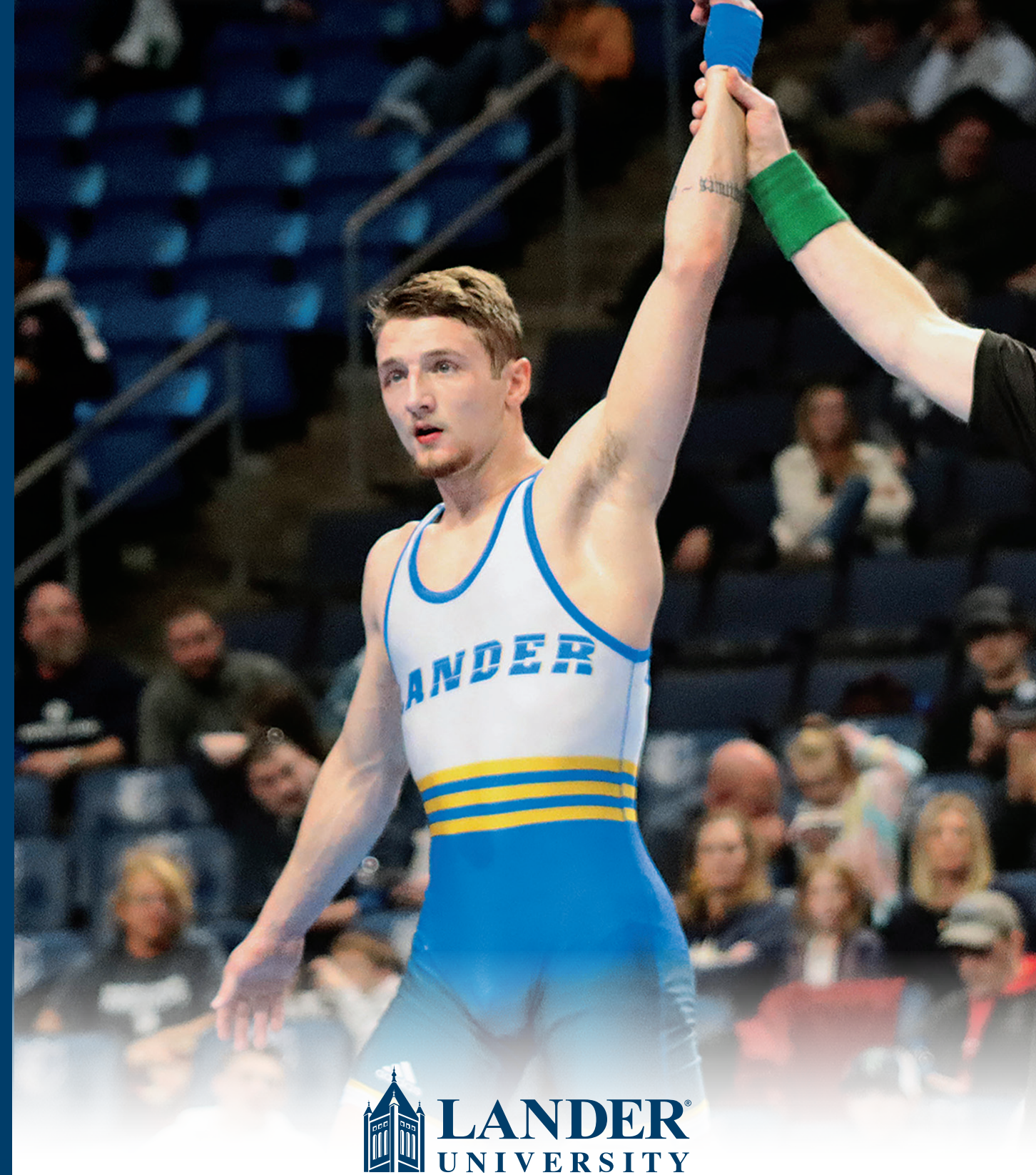
**Minors**

- Art History
- Biology
- Business Administration
- Ceramics
- Chemistry
- Child & Family Studies
- Computer Information Systems
- Criminal Justice
- Cybersecurity
- Data Science
- Design
- English
- Entrepreneurship
- Environmental Science
- Esports Management & Administration
- European Studies
- Forensic Science
- Film Studies
- French
- General Studio Art
- Health Care Management
- History
- Homeland Security
- Human Services
- Information Technology
- International Business
- International Studies
- Mathematics
- Media & Communication
- Media Writing
- Military Science & Leadership
- Music
- Music History
- Non-Profit Management
- Painting & Drawing
- Philosophy
- Photography
- Political Science
- Pre-Law
- Pre-Social Work
- Psychology
- Public Administration
- Public Health
- Public Relations
- Religion
- Sculpture
- Sociology
- Spanish
- Speech & Performance
- Sports Management
- Sports Media
- Therapeutic Horsemanship
- Writing

**Pre-Professional Studies**

- Pre-Athletic Training
- Pre-Dentistry
- Pre-Medicine
- Pre-Occupational Therapy
- Pre-Optometry
- Pre-Pharmacy
- Pre-Physical Therapy
- Pre-Physician Assistant
- Pre-Veterinary Medicine

# LAUNCH YOUR FUTURE WITH LANDER



YOUR STATE UNIVERSITY IN GREENWOOD, S.C.

**Frozen Tuition** **UNDERGRADUATE IN-STATE, FULL-TIME TUITION & GENERAL FEES**  
**\$11,700**  
 While Lander is rapidly growing, one thing that's not increasing is the cost to attend.

**CAREER FOCUSED**  
**60+**  
 NUMBER OF EMPLOYER RECRUITING AND GRADUATE SCHOOL REPS VISITING LANDER EACH YEAR

**A PERFECT FIT**  
**4,200**  
 APPROX. STUDENT BODY SIZE, WITH AN AVERAGE CLASS SIZE OF 20

**RELEVANT NOW**  
**90+**  
 AREAS OF STUDY & MARKET-DRIVEN PROGRAMS IN TODAY'S MOST IN-DEMAND FIELDS

**FOUNDED**  
**1872**  
 FOUR-YEAR, PUBLIC, COEDUCATIONAL UNIVERSITY—ONE OF SOUTH CAROLINA'S OLDEST INSTITUTIONS OF HIGHER EDUCATION

You've envisioned it before.  
 Your future.  
 It's big, and it's bold.  
 Because that's what your potential demands.  
 Now, it's time to make it happen.  
 At Lander University,  
 the best way to launch big, bold futures...  
*is together.*

**Our Promise to You**  
 You'll find employment in your field within 60 days of graduation, or Lander will hire you as a graduate assistant and guarantee your acceptance into the Lander graduate program of your choice.\* As a graduate assistant, you will save 50% on graduate tuition and receive a \$6,000 stipend per year—that's Lander's commencement-to-career promise.

\*To qualify, students must graduate from Lander in four years with at least a 3.0 GPA. Offer begins for Class of 2025. Additional admissions requirements may apply for specific graduate programs.



**Visit Campus!**

Scan here to schedule your tour or visit online at [lander.edu/visit](http://lander.edu/visit).

**Daily Tours** M-F, 10:00 a.m. & 2:00 p.m.



320 Stanley Avenue | Greenwood, SC 29649  
 1-888-4LANDER | 864-388-8307  
[admissions@lander.edu](mailto:admissions@lander.edu) | [lander.edu](http://lander.edu)

For a complete list of academic programs, please visit: [lander.edu/majors-minors](http://lander.edu/majors-minors)

Lander University provides equal access and does not discriminate on the basis of race, color, sex, sexual orientation, religion, national origin, pregnancy, gender, gender identity, gender expression, genetic information, disability or age in its programs and activities. For further information on Lander's notice of nondiscrimination, visit [lander.edu/titleix](http://lander.edu/titleix) and [lander.edu/non-discrimination](http://lander.edu/non-discrimination).

**Majors**

- Biology
  - Genetics
- Business Administration (BAS)
  - Accounting
  - Financial Services
  - Health Care Management
  - Hospitality Management
  - IT Management
  - Management/Marketing
  - Sports Management
- Chemistry
  - Dual Engineering
  - Forensic Science
  - Health Sciences
  - Secondary Certification
- Computer Information Systems
  - Dual Engineering
  - Networking
  - Software Development
- Criminology
- Cybersecurity
  - Computer Information Systems
  - Political Science
- Data Science
  - Business Analytics
  - Computer Information Systems
  - Mathematics
- Digital Media Production
- Early Childhood Education
  - Montessori
- Elementary Education
- English
  - Creative Writing
  - Professional Writing
  - Secondary Teacher Certification
- Entrepreneurship
- Environmental Science
  - Forensic Science
- Exercise Science
- Fitness & Wellness
- Graphic Design
- History
  - Public History
  - Secondary Social Studies Teacher Certification
- Human Services
- Humanities
- Interdisciplinary Studies
  - Allied Health Studies
  - Educational Psychology for Special Populations
  - Environmental Health
  - Equine-Assisted Activities & Therapies
  - Financial Services & Public Relations
  - Graphic Design & Marketing
  - Health Promotion & Wellness: Behavioral Health
  - Health Promotion & Wellness: Healthcare Management
  - Health Promotion & Wellness: Human Services
  - Health Promotion & Wellness: Policy
  - International Environment & Sustainability Management, Public Relations
  - Studies in Early Childhood Education & Psychology
  - Studies in Early Childhood with Special Needs
  - Teaching & Learning for Diverse Elementary Students (Reading/Media)
- International Studies
- Mathematics
  - Dual Engineering
  - Secondary Teacher Certification
- Media & Communication
  - Medical Biology
- Middle Level Education
- Music
  - Instrumental
  - Keyboard
  - Vocal
  - K-12 Certification, Choral
  - K-12 Certification, Instrumental
  - K-12 Certification, Keyboard
- Nursing
  - Prelicensure
  - RN to BSN Completion
- Paralegal Studies
- Physical Education,
  - K-12 Teacher Certification
- Political Science
  - Public Administration
- Psychology
- Public Health
  - Genetic Health Studies
- Sociology
- Spanish
  - Special Education
- Visual Art
  - 2D Studio
  - 3D Studio
  - K-12 Teacher Certification

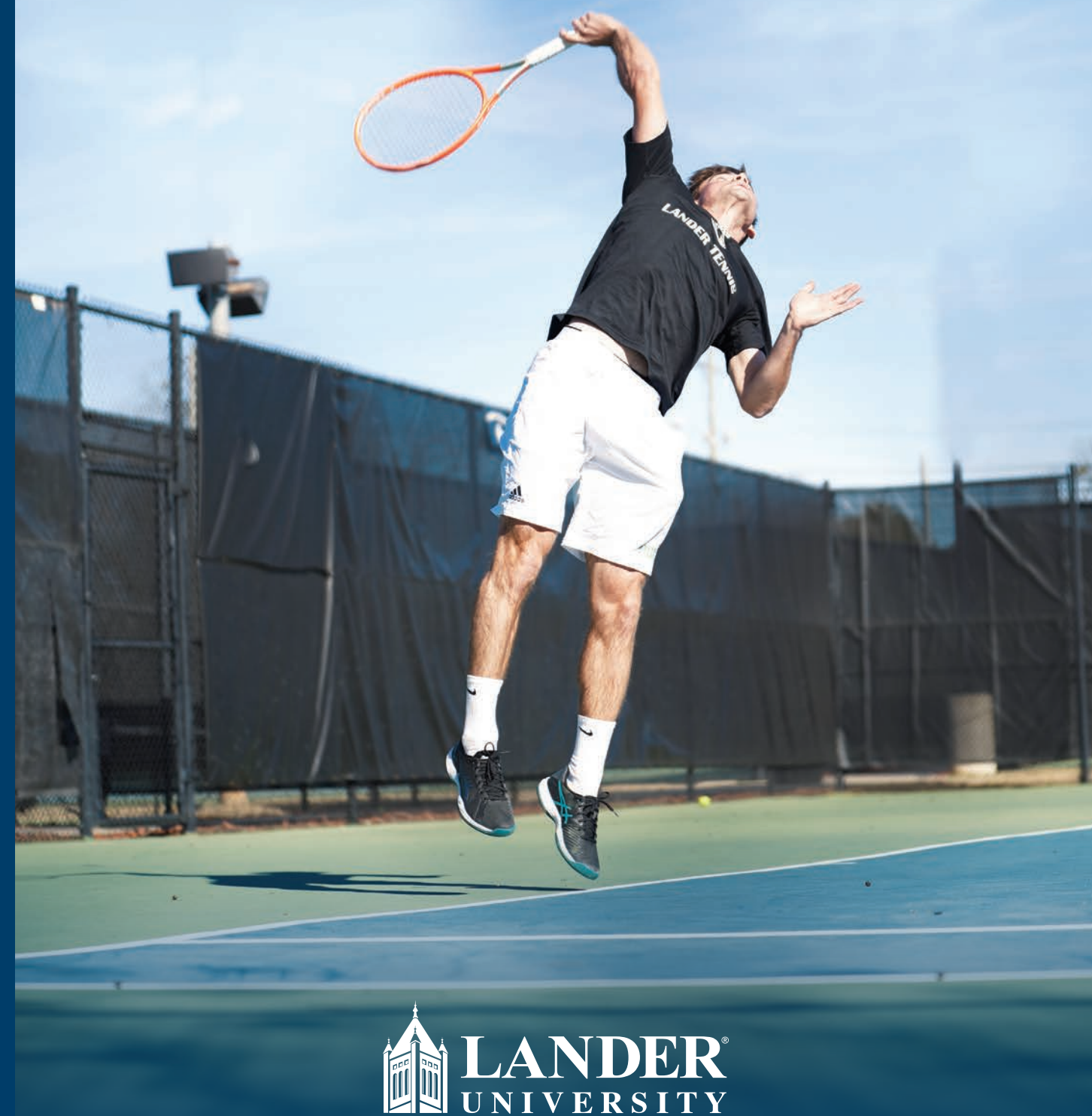
**Minors**

- Art History
- Biology
- Business Administration
- Ceramics
- Chemistry
- Child & Family Studies
- Computer Information Systems
- Criminal Justice
- Cybersecurity
- Data Science
- Design
- English
- Entrepreneurship
- Environmental Science
- Esports Management & Administration
- European Studies
- Forensic Science
- Film Studies
- French
- General Studio Art
- Health Care Management
- History
- Homeland Security
- Human Services
- Information Technology
- International Business
- International Studies
- Mathematics
- Media & Communication
- Media Writing
- Military Science & Leadership
- Music
- Music History
- Non-Profit Management
- Painting & Drawing
- Philosophy
- Photography
- Political Science
- Pre-Law
- Pre-Social Work
- Psychology
- Public Administration
- Public Health
- Public Relations
- Religion
- Sculpture
- Sociology
- Spanish
- Speech & Performance
- Sports Management
- Sports Media
- Therapeutic Horsemanship
- Writing

**Pre-Professional Studies**

- Pre-Athletic Training
- Pre-Dentistry
- Pre-Medicine
- Pre-Occupational Therapy
- Pre-Optometry
- Pre-Pharmacy
- Pre-Physical Therapy
- Pre-Physician Assistant
- Pre-Veterinary Medicine

# LAUNCH YOUR FUTURE WITH LANDER



YOUR STATE UNIVERSITY IN GREENWOOD, S.C.

CAREER FOCUSED

60+

NUMBER OF EMPLOYER RECRUITING AND GRADUATE SCHOOL REPS VISITING LANDER EACH YEAR

RELEVANT NOW

90+

AREAS OF STUDY AND MARKET-DRIVEN PROGRAMS IN TODAY'S MOST IN-DEMAND FIELDS

A PERFECT FIT

4,200

APPROX. STUDENT BODY SIZE, WITH AN AVERAGE CLASS SIZE OF 20

FOUNDED

1872

FOUR-YEAR, PUBLIC, COEDUCATIONAL UNIVERSITY—ONE OF SOUTH CAROLINA'S OLDEST INSTITUTIONS OF HIGHER EDUCATION

Frozen Tuition UNDERGRADUATE IN-STATE, FULL-TIME TUITION & GENERAL FEES

\$11,700

While Lander is rapidly growing, one thing that's not increasing is the cost to attend.

Our Promise to You

You'll find employment in your field within 60 days of graduation, or Lander will hire you as a graduate assistant and guarantee your acceptance into the Lander graduate program of your choice.\* As a graduate assistant, you will save 50% on graduate tuition and receive a \$6,000 stipend per year—that's Lander's commencement-to-career promise.

You've envisioned it before.

Your future.

It's big, and it's bold.

Because that's what your potential demands.

Now, it's time to make it happen.

At Lander University,

the best way to launch big, bold futures... *is together.*

YOUR STATE UNIVERSITY IN GREENWOOD, S.C.

\*To qualify, students must graduate from Lander in four years with at least a 3.0 GPA. Offer begins for Class of 2025. Additional admissions requirements may apply for specific graduate programs.



**Visit Campus!**

Scan here to schedule your tour or visit online at [lander.edu/visit](http://lander.edu/visit).

**Daily Tours** M-F, 10:00 a.m. & 2:00 p.m.



320 Stanley Avenue | Greenwood, SC 29649  
 1-888-4LANDER | 864-388-8307  
[admissions@lander.edu](mailto:admissions@lander.edu) | [lander.edu](http://lander.edu)

For a complete list of academic programs, please visit: [lander.edu/majors-minors](http://lander.edu/majors-minors)

Lander University provides equal access and does not discriminate on the basis of race, color, sex, sexual orientation, religion, national origin, pregnancy, gender, gender identity, gender expression, genetic information, disability or age in its programs and activities. For further information on Lander's notice of nondiscrimination, visit [lander.edu/titleix](http://lander.edu/titleix) and [lander.edu/non-discrimination](http://lander.edu/non-discrimination).

**Majors**

- Biology
  - Genetics
- Business Administration (BAS)
  - Accounting
  - Financial Services
  - Health Care Management
  - Hospitality Management
  - IT Management
  - Management/Marketing
  - Sports Management
- Chemistry
  - Dual Engineering
  - Forensic Science
  - Health Sciences
  - Secondary Certification
- Computer Information Systems
  - Dual Engineering
  - Networking
  - Software Development
- Criminology
- Cybersecurity
  - Computer Information Systems
  - Political Science
- Data Science
  - Business Analytics
  - Computer Information Systems
  - Mathematics
- Digital Media Production
- Early Childhood Education
  - Montessori
- Elementary Education
- English
  - Creative Writing
  - Professional Writing
  - Secondary Teacher Certification
- Entrepreneurship
- Environmental Science
  - Forensic Science
- Exercise Science
- Fitness & Wellness
- Graphic Design
- History
  - Public History
  - Secondary Social Studies Teacher Certification
- Human Services
- Humanities
- Interdisciplinary Studies
  - Allied Health Studies
  - Educational Psychology for Special Populations
  - Environmental Health
  - Equine-Assisted Activities & Therapies
  - Financial Services & Public Relations
  - Graphic Design & Marketing
  - Health Promotion & Wellness: Behavioral Health
  - Health Promotion & Wellness: Healthcare Management
  - Health Promotion & Wellness: Human Services
  - Health Promotion & Wellness: Policy
  - International Environment & Sustainability Management, Public Relations
  - Studies in Early Childhood Education & Psychology
  - Studies in Early Childhood with Special Needs
  - Teaching & Learning for Diverse Elementary Students (Reading/Media)
- International Studies
- Mathematics
  - Dual Engineering
  - Secondary Teacher Certification
- Media & Communication
- Medical Biology
- Middle Level Education
- Music
  - Instrumental
  - Keyboard
  - Vocal
  - K-12 Certification, Choral
  - K-12 Certification, Instrumental
  - K-12 Certification, Keyboard
- Nursing
  - Prelicensure
  - RN to BSN Completion
- Paralegal Studies
- Physical Education,
  - K-12 Teacher Certification
- Political Science
  - Public Administration
- Psychology
- Public Health
  - Genetic Health Studies
- Sociology
- Spanish
  - Special Education
- Visual Art
  - 2D Studio
  - 3D Studio
  - K-12 Teacher Certification

**Minors**

- Art History
- Biology
- Business Administration
- Ceramics
- Chemistry
- Child & Family Studies
- Computer Information Systems
- Criminal Justice
- Cybersecurity
- Data Science
- Design
- English
- Entrepreneurship
- Environmental Science
- Esports Management & Administration
- European Studies
- Forensic Science
- Film Studies
- French
- General Studio Art
- Health Care Management
- History
- Homeland Security
- Human Services
- Information Technology
- International Business
- International Studies
- Mathematics
- Media & Communication
- Media Writing
- Military Science & Leadership
- Music
- Music History
- Non-Profit Management
- Painting & Drawing
- Philosophy
- Photography
- Political Science
- Pre-Law
- Pre-Social Work
- Psychology
- Public Administration
- Public Health
- Public Relations
- Religion
- Sculpture
- Sociology
- Spanish
- Speech & Performance
- Sports Management
- Sports Media
- Therapeutic Horsemanship
- Writing

**Pre-Professional Studies**

- Pre-Athletic Training
- Pre-Dentistry
- Pre-Medicine
- Pre-Occupational Therapy
- Pre-Optometry
- Pre-Pharmacy
- Pre-Physical Therapy
- Pre-Physician Assistant
- Pre-Veterinary Medicine

# LAUNCH YOUR FUTURE WITH LANDER



**Frozen Tuition** **UNDERGRADUATE IN-STATE, FULL-TIME TUITION & GENERAL FEES**  
**\$11,700**  
 While Lander is rapidly growing, one thing that's not increasing is the cost to attend.

**A PERFECT FIT**  
**4,200**  
 APPROX. STUDENT BODY SIZE, WITH AN AVERAGE CLASS SIZE OF 20

**RELEVANT NOW**  
**90+**  
 AREAS OF STUDY AND MARKET-DRIVEN PROGRAMS IN TODAY'S MOST IN-DEMAND FIELDS

**CAREER FOCUSED**  
**60+**  
 NUMBER OF EMPLOYER RECRUITING AND GRADUATE SCHOOL REPS VISITING LANDER EACH YEAR

**FOUNDED**  
**1872**  
 FOUR-YEAR, PUBLIC, COEDUCATIONAL UNIVERSITY—ONE OF SOUTH CAROLINA'S OLDEST INSTITUTIONS OF HIGHER EDUCATION

You've envisioned it before.  
 Your future.  
 It's big, and it's bold.  
 Because that's what your potential demands.  
 Now, it's time to make it happen.  
 At Lander University,  
 the best way to launch big, bold futures...  
*is together.*

**Our Promise to You**  
 You'll find employment in your field within 60 days of graduation, or Lander will hire you as a graduate assistant and guarantee your acceptance into the Lander graduate program of your choice.\* As a graduate assistant, you will save 50% on graduate tuition and receive a \$6,000 stipend per year—that's Lander's commencement-to-career promise.

\*To qualify, students must graduate from Lander in four years with at least a 3.0 GPA. Offer begins for Class of 2025. Additional admissions requirements may apply for specific graduate programs.



### Visit Campus!

Scan here to schedule your tour or visit online at [lander.edu/visit](http://lander.edu/visit).

Daily Tours M-F, 10:00 a.m. & 2:00 p.m.



320 Stanley Avenue | Greenwood, SC 29649  
1-888-4LANDER | 864-388-8307  
[admissions@lander.edu](mailto:admissions@lander.edu) | [lander.edu](http://lander.edu)

For a complete list of academic programs, please visit: [lander.edu/majors-minors](http://lander.edu/majors-minors)

Lander University provides equal access and does not discriminate on the basis of race, color, sex, sexual orientation, religion, national origin, pregnancy, gender identity, gender expression, genetic information, disability or age in its programs and activities. For further information on Lander's notice of nondiscrimination, visit [lander.edu/titleix](http://lander.edu/titleix) and [lander.edu/non-discrimination](http://lander.edu/non-discrimination).

#### Majors

Biology  
Genetics  
Business Administration (BAS)  
Business Administration  
Accounting  
Financial Services  
Health Care Management  
Hospitality Management  
IT Management  
Management/Marketing  
Sports Management

#### Chemistry

Dual Engineering  
Forensic Science  
Health Sciences  
Secondary Certification  
Computer Information Systems  
Dual Engineering  
Networking  
Software Development

#### Criminology

Cybersecurity  
Computer Information Systems  
Political Science

#### Data Science

Business Analytics  
Computer Information Systems  
Mathematics

#### Digital Media Production

Early Childhood Education  
Montessori

#### Elementary Education

English  
Creative Writing  
Professional Writing  
Secondary Teacher Certification

#### Entrepreneurship

Environmental Science  
Forensic Science

#### Exercise Science

Fitness & Wellness  
Graphic Design  
History  
Public History  
Secondary Social Studies Teacher Certification

#### Human Services

Humanities  
Interdisciplinary Studies  
Allied Health Studies  
Educational Psychology for Special Populations  
Environmental Health  
Equine-Assisted Activities & Therapies  
Financial Services & Public Relations  
Graphic Design & Marketing  
Health Promotion & Wellness: Behavioral Health  
Health Promotion & Wellness: Healthcare Management  
Health Promotion & Wellness: Human Services  
Health Promotion & Wellness: Policy  
International Environment & Sustainability  
Management, Public Relations  
Studies in Early Childhood Education & Psychology  
Studies in Early Childhood with Special Needs  
Teaching & Learning for Diverse Elementary Students (Reading/Media)

#### International Studies

Mathematics  
Dual Engineering  
Secondary Teacher Certification

#### Media & Communication

Medical Biology  
Middle Level Education

#### Music

Instrumental  
Keyboard  
Vocal  
K-12 Certification, Choral  
K-12 Certification, Instrumental  
K-12 Certification, Keyboard

#### Nursing

Preclicensure  
RN to BSN Completion

Paralegal Studies  
Physical Education,  
K-12 Teacher Certification  
Political Science  
Public Administration  
Psychology  
Public Health  
Genetic Health Studies  
Sociology  
Spanish  
Special Education  
Visual Art  
2D Studio  
3D Studio  
K-12 Teacher Certification

#### Minors

Art History  
Biology  
Business Administration  
Ceramics  
Chemistry  
Child & Family Studies  
Computer Information Systems  
Criminal Justice  
Cybersecurity  
Data Science  
Design  
English  
Entrepreneurship  
Environmental Science  
Esports Management & Administration  
European Studies  
Forensic Science  
Film Studies  
French  
General Studio Art  
Health Care Management  
History  
Homeland Security  
Human Services  
Information Technology  
International Business  
International Studies  
Mathematics  
Media & Communication  
Media Writing  
Military Science & Leadership  
Music  
Music History  
Non-Profit Management  
Painting & Drawing  
Philosophy  
Photography  
Political Science  
Pre-Law  
Pre-Social Work  
Psychology  
Public Administration  
Public Health  
Public Relations  
Religion  
Sculpture  
Sociology  
Spanish  
Speech & Performance  
Sports Management  
Sports Media  
Therapeutic Horsemanship  
Writing

#### Pre-Professional Studies

Pre-Athletic Training  
Pre-Dentistry  
Pre-Medicine  
Pre-Occupational Therapy  
Pre-Optometry  
Pre-Pharmacy  
Pre-Physical Therapy  
Pre-Physician Assistant  
Pre-Veterinary Medicine

# LAUNCH YOUR FUTURE WITH LANDER



Frozen Tuition **\$11,700**

UNDERGRADUATE IN-STATE, FULL-TIME TUITION & GENERAL FEES

While Lander is rapidly growing, one thing that's not increasing is the cost to attend.

A PERFECT FIT

**4,200**

APPROX. STUDENT BODY SIZE, WITH AN AVERAGE CLASS SIZE OF 20

CAREER FOCUSED

**60+**

NUMBER OF EMPLOYER RECRUITING AND GRADUATE SCHOOL REPS VISITING LANDER EACH YEAR

RELEVANT NOW

**90+**

AREAS OF STUDY & MARKET-DRIVEN PROGRAMS IN TODAY'S MOST IN-DEMAND FIELDS

FOUNDED

**1872**

FOUR-YEAR, PUBLIC, COEDUCATIONAL UNIVERSITY—ONE OF SOUTH CAROLINA'S OLDEST INSTITUTIONS OF HIGHER EDUCATION

You've envisioned it before.

Your future.

It's big, and it's bold.

Because that's what your potential demands.

Now, it's time to make it happen.

At Lander University, the best way to launch big, bold futures... is together.

### Our Promise to You

You'll find employment in your field within 60 days of graduation, or Lander will hire you as a graduate assistant and guarantee your acceptance into the Lander graduate program of your choice.\* As a graduate assistant, you will save 50% on graduate tuition and receive a \$6,000 stipend per year—that's Lander's commencement-to-career promise.

\*To qualify, students must graduate from Lander in four years with at least a 3.0 GPA. Offer begins for Class of 2025. Additional admissions requirements may apply for specific graduate programs.



**Visit Campus!**

Scan here to schedule your tour or visit online at [lander.edu/visit](http://lander.edu/visit).

**Daily Tours** M-F, 10:00 a.m. & 2:00 p.m.



320 Stanley Avenue | Greenwood, SC 29649  
1-888-4LANDER | 864-388-8307  
[admissions@lander.edu](mailto:admissions@lander.edu) | [lander.edu](http://lander.edu)

For a complete list of academic programs, please visit: [lander.edu/majors-minors](http://lander.edu/majors-minors)

Lander University provides equal access and does not discriminate on the basis of race, color, sex, sexual orientation, religion, national origin, pregnancy, gender, gender identity, gender expression, genetic information, disability or age in its programs and activities. For further information on Lander's notice of nondiscrimination, visit [lander.edu/titleix](http://lander.edu/titleix) and [lander.edu/non-discrimination](http://lander.edu/non-discrimination).

**Majors**

- Biology
  - Genetics
- Business Administration (BAS)
  - Accounting
  - Financial Services
  - Health Care Management
  - Hospitality Management
  - IT Management
  - Management/Marketing
  - Sports Management
- Chemistry
  - Dual Engineering
  - Forensic Science
  - Health Sciences
  - Secondary Certification
- Computer Information Systems
  - Dual Engineering
  - Networking
  - Software Development
- Criminology
- Cybersecurity
  - Computer Information Systems
  - Political Science
- Data Science
  - Business Analytics
  - Computer Information Systems
  - Mathematics
- Digital Media Production
- Early Childhood Education
  - Montessori
- Elementary Education
- English
  - Creative Writing
  - Professional Writing
  - Secondary Teacher Certification
- Entrepreneurship
- Environmental Science
  - Forensic Science
- Exercise Science
- Fitness & Wellness
- Graphic Design
- History
  - Public History
  - Secondary Social Studies Teacher Certification
- Human Services
- Humanities
- Interdisciplinary Studies
  - Allied Health Studies
  - Educational Psychology for Special Populations
  - Environmental Health
  - Equine-Assisted Activities & Therapies
  - Financial Services & Public Relations
  - Graphic Design & Marketing
  - Health Promotion & Wellness: Behavioral Health
  - Health Promotion & Wellness: Healthcare Management
  - Health Promotion & Wellness: Human Services
  - Health Promotion & Wellness: Policy
  - International Environment & Sustainability Management, Public Relations
  - Studies in Early Childhood Education & Psychology
  - Studies in Early Childhood with Special Needs
  - Teaching & Learning for Diverse Elementary Students (Reading/Media)
- International Studies
- Mathematics
  - Dual Engineering
  - Secondary Teacher Certification
- Media & Communication
- Medical Biology
- Middle Level Education
- Music
  - Instrumental
  - Keyboard
  - Vocal
  - K-12 Certification, Choral
  - K-12 Certification, Instrumental
  - K-12 Certification, Keyboard
- Nursing
  - Prelicensure
  - RN to BSN Completion
- Paralegal Studies
- Physical Education,
  - K-12 Teacher Certification
- Political Science
  - Public Administration
- Psychology
- Public Health
  - Genetic Health Studies
- Sociology
- Spanish
  - Special Education
- Visual Art
  - 2D Studio
  - 3D Studio
  - K-12 Teacher Certification

**Minors**

- Art History
- Biology
- Business Administration
- Ceramics
- Chemistry
- Child & Family Studies
- Computer Information Systems
- Criminal Justice
- Cybersecurity
- Data Science
- Design
- English
- Entrepreneurship
- Environmental Science
- Esports Management & Administration
- European Studies
- Forensic Science
- Film Studies
- French
- General Studio Art
- Health Care Management
- History
- Homeland Security
- Human Services
- Information Technology
- International Business
- International Studies
- Mathematics
- Media & Communication
- Media Writing
- Military Science & Leadership
- Music
- Music History
- Non-Profit Management
- Painting & Drawing
- Philosophy
- Photography
- Political Science
- Pre-Law
- Pre-Social Work
- Psychology
- Public Administration
- Public Health
- Public Relations
- Religion
- Sculpture
- Sociology
- Spanish
- Speech & Performance
- Sports Management
- Sports Media
- Therapeutic Horsemanship
- Writing

**Pre-Professional Studies**

- Pre-Athletic Training
- Pre-Dentistry
- Pre-Medicine
- Pre-Occupational Therapy
- Pre-Optometry
- Pre-Pharmacy
- Pre-Physical Therapy
- Pre-Physician Assistant
- Pre-Veterinary Medicine

# LAUNCH YOUR FUTURE WITH LANDER



YOUR STATE UNIVERSITY IN GREENWOOD, S.C.



**Frozen Tuition** UNDERGRADUATE IN-STATE, FULL-TIME TUITION & GENERAL FEES  
**\$11,700** While Lander is rapidly growing, one thing that's not increasing is the cost to attend.

**CAREER FOCUSED**

**60+** NUMBER OF EMPLOYER RECRUITING AND GRADUATE SCHOOL REPS VISITING LANDER EACH YEAR



**RELEVANT NOW**  
**90+** AREAS OF STUDY & MARKET-DRIVEN PROGRAMS IN TODAY'S MOST IN-DEMAND FIELDS

**FOUNDED**

**1872** FOUR-YEAR, PUBLIC, COEDUCATIONAL UNIVERSITY—ONE OF SOUTH CAROLINA'S OLDEST INSTITUTIONS OF HIGHER EDUCATION



**A PERFECT FIT**  
**4,200** APPROX. STUDENT BODY SIZE, WITH AN AVERAGE CLASS SIZE OF 20



You've envisioned it before.

Your future.

It's big, and it's bold.

Because that's what your potential demands.

Now, it's time to make it happen.

At Lander University,

the best way to launch big, bold futures...

*is together.*

**Our Promise to You**

You'll find employment in your field within 60 days of graduation, or Lander will hire you as a graduate assistant and guarantee your acceptance into the Lander graduate program of your choice.\* As a graduate assistant, you will save 50% on graduate tuition and receive a \$6,000 stipend per year—that's Lander's commencement-to-career promise.



\*To qualify, students must graduate from Lander in four years with at least a 3.0 GPA. Offer begins for Class of 2025. Additional admissions requirements may apply for specific graduate programs.



**Visit Campus!**

Scan here to schedule your tour or visit online at [lander.edu/visit](http://lander.edu/visit).

Daily Tours M-F, 10:00 a.m. & 2:00 p.m.



320 Stanley Avenue | Greenwood, SC 29649  
1-888-4LANDER | 864-388-8307  
[admissions@lander.edu](mailto:admissions@lander.edu) | [lander.edu](http://lander.edu)

For a complete list of academic programs, please visit: [lander.edu/majors-minors](http://lander.edu/majors-minors)

Lander University provides equal access and does not discriminate on the basis of race, color, sex, sexual orientation, religion, national origin, pregnancy, gender, gender identity, gender expression, genetic information, disability or age in its programs and activities. For further information on Lander's notice of nondiscrimination, visit [lander.edu/titleix](http://lander.edu/titleix) and [lander.edu/non-discrimination](http://lander.edu/non-discrimination).

**Majors**

- Biology
  - Genetics
- Business Administration (BAS)
  - Accounting
  - Financial Services
  - Health Care Management
  - Hospitality Management
  - IT Management
  - Management/Marketing
  - Sports Management
- Chemistry
  - Dual Engineering
  - Forensic Science
  - Health Sciences
  - Secondary Certification
- Computer Information Systems
  - Dual Engineering
  - Networking
  - Software Development
- Criminology
- Cybersecurity
  - Computer Information Systems
  - Political Science
- Data Science
  - Business Analytics
  - Computer Information Systems
  - Mathematics
- Digital Media Production
- Early Childhood Education
  - Montessori
- Elementary Education
- English
  - Creative Writing
  - Professional Writing
  - Secondary Teacher Certification
- Entrepreneurship
- Environmental Science
  - Forensic Science
- Exercise Science
- Fitness & Wellness
- Graphic Design
- History
  - Public History
  - Secondary Social Studies Teacher Certification
- Human Services
- Humanities
- Interdisciplinary Studies
  - Allied Health Studies
  - Educational Psychology for Special Populations
  - Environmental Health
  - Equine-Assisted Activities & Therapies
  - Financial Services & Public Relations
  - Graphic Design & Marketing
  - Health Promotion & Wellness: Behavioral Health
  - Health Promotion & Wellness: Healthcare Management
  - Health Promotion & Wellness: Human Services
  - Health Promotion & Wellness: Policy
  - International Environment & Sustainability Management, Public Relations
  - Studies in Early Childhood Education & Psychology
  - Studies in Early Childhood with Special Needs
  - Teaching & Learning for Diverse Elementary Students (Reading/Media)
- International Studies
- Mathematics
  - Dual Engineering
  - Secondary Teacher Certification
- Media & Communication
- Medical Biology
- Middle Level Education
- Music
  - Instrumental
  - Keyboard
  - Vocal
  - K-12 Certification, Choral
  - K-12 Certification, Instrumental
  - K-12 Certification, Keyboard
- Nursing
  - Preclicensure
  - RN to BSN Completion
- Paralegal Studies
- Physical Education,
  - K-12 Teacher Certification
- Political Science
  - Public Administration
- Psychology
  - Genetic Health Studies
- Public Health
- Sociology
  - Health Studies
- Sociology
  - Spanish
- Special Education
- Visual Art
  - 2D Studio
  - 3D Studio
  - K-12 Teacher Certification

**Minors**

- Art History
- Biology
- Business Administration
- Ceramics
- Chemistry
- Child & Family Studies
- Computer Information Systems
- Criminal Justice
- Cybersecurity
- Data Science
- Design
- English
- Entrepreneurship
- Environmental Science
- Esports Management & Administration
- European Studies
- Forensic Science
- Film Studies
- French
- General Studio Art
- Health Care Management
- History
- Homeland Security
- Human Services
- Information Technology
- International Business
- International Studies
- Mathematics
- Media & Communication
- Media Writing
- Military Science & Leadership
- Music
- Music History
- Non-Profit Management
- Painting & Drawing
- Philosophy
- Photography
- Political Science
- Pre-Law
- Pre-Social Work
- Psychology
- Public Administration
- Public Health
- Public Relations
- Religion
- Sculpture
- Sociology
- Spanish
- Speech & Performance
- Sports Management
- Sports Media
- Therapeutic Horsemanship
- Writing

**Pre-Professional Studies**

- Pre-Athletic Training
- Pre-Dentistry
- Pre-Medicine
- Pre-Occupational Therapy
- Pre-Optometry
- Pre-Pharmacy
- Pre-Physical Therapy
- Pre-Physician Assistant
- Pre-Veterinary Medicine

# LAUNCH LANDER

YOUR FUTURE WITH



YOUR STATE UNIVERSITY IN GREENWOOD, S.C.



**Frozen Tuition**  
**\$11,700**

**UNDERGRADUATE IN-STATE, FULL-TIME TUITION & GENERAL FEES**  
While Lander is rapidly growing, one thing that's not increasing is the cost to attend.

**RELEVANT NOW**

**90+**

AREAS OF STUDY & MARKET-DRIVEN PROGRAMS IN TODAY'S MOST IN-DEMAND FIELDS



**CAREER FOCUSED**

**60+**

NUMBER OF EMPLOYER RECRUITING AND GRADUATE SCHOOL REPS VISITING LANDER EACH YEAR



**FOUNDED**

**1872**

FOUR-YEAR, PUBLIC, COEDUCATIONAL UNIVERSITY—ONE OF SOUTH CAROLINA'S OLDEST INSTITUTIONS OF HIGHER EDUCATION



**A PERFECT FIT**

**4,200**

APPROX. STUDENT BODY SIZE, WITH AN AVERAGE CLASS SIZE OF 20



You've envisioned it before.

Your future.

It's big, and it's bold.

Because that's what your potential demands.

Now, it's time to make it happen.

At Lander University,

the best way to launch big, bold futures...

*is together.*

**Our Promise to You**

You'll find employment in your field within 60 days of graduation, or Lander will hire you as a graduate assistant and guarantee your acceptance into the Lander graduate program of your choice.\* As a graduate assistant, you will save 50% on graduate tuition and receive a \$6,000 stipend per year—that's Lander's commencement-to-career promise.



\*To qualify, students must graduate from Lander in four years with at least a 3.0 GPA. Offer begins for Class of 2025. Additional admissions requirements may apply for specific graduate programs.





**Visit Campus!**

Scan here to schedule your tour or visit online at [lander.edu/visit](http://lander.edu/visit).

Daily Tours M-F, 10:00 a.m. & 2:00 p.m.



320 Stanley Avenue | Greenwood, SC 29649  
1-888-4LANDER | 864-388-8307  
[admissions@lander.edu](mailto:admissions@lander.edu) | [lander.edu](http://lander.edu)

For a complete list of academic programs, please visit: [lander.edu/majors-minors](http://lander.edu/majors-minors)

Lander University provides equal access and does not discriminate on the basis of race, color, sex, sexual orientation, religion, national origin, pregnancy, gender, gender identity, gender expression, genetic information, disability or age in its programs and activities. For further information on Lander's notice of nondiscrimination, visit [lander.edu/titleix](http://lander.edu/titleix) and [lander.edu/non-discrimination](http://lander.edu/non-discrimination).

**Majors**

- Biology
  - Genetics
- Business Administration (BAS)
  - Accounting
  - Financial Services
  - Health Care Management
  - Hospitality Management
  - IT Management
  - Management/Marketing
  - Sports Management
- Chemistry
  - Dual Engineering
  - Forensic Science
  - Health Sciences
  - Secondary Certification
- Computer Information Systems
  - Dual Engineering
  - Networking
  - Software Development
- Criminology
- Cybersecurity
  - Computer Information Systems
  - Political Science
- Data Science
  - Business Analytics
  - Computer Information Systems
  - Mathematics
- Digital Media Production
- Early Childhood Education
  - Montessori
- Elementary Education
- English
  - Creative Writing
  - Professional Writing
  - Secondary Teacher Certification
- Entrepreneurship
- Environmental Science
  - Forensic Science
- Exercise Science
- Fitness & Wellness
- Graphic Design
- History
  - Public History
  - Secondary Social Studies Teacher Certification
- Human Services
- Humanities
- Interdisciplinary Studies
  - Allied Health Studies
  - Educational Psychology for Special Populations
  - Environmental Health
  - Equine-Assisted Activities & Therapies
  - Financial Services & Public Relations
  - Graphic Design & Marketing
  - Health Promotion & Wellness: Behavioral Health
  - Health Promotion & Wellness: Healthcare Management
  - Health Promotion & Wellness: Human Services
  - Health Promotion & Wellness: Policy
  - International Environment & Sustainability Management, Public Relations
  - Studies in Early Childhood Education & Psychology
  - Studies in Early Childhood with Special Needs
  - Teaching & Learning for Diverse Elementary Students (Reading/Media)
- International Studies
- Mathematics
  - Dual Engineering
  - Secondary Teacher Certification
- Media & Communication
- Medical Biology
- Middle Level Education
- Music
  - Instrumental
  - Keyboard
  - Vocal
  - K-12 Certification, Choral
  - K-12 Certification, Instrumental
  - K-12 Certification, Keyboard
- Nursing
  - Prelicensure
  - RN to BSN Completion
- Paralegal Studies
- Physical Education,
  - K-12 Teacher Certification
- Political Science
  - Public Administration
- Psychology
- Public Health
  - Genetic Health Studies
- Sociology
- Spanish
  - Special Education
- Visual Art
  - 2D Studio
  - 3D Studio
  - K-12 Teacher Certification

**Minors**

- Art History
- Biology
- Business Administration
- Ceramics
- Chemistry
- Child & Family Studies
- Computer Information Systems
- Criminal Justice
- Cybersecurity
- Data Science
- Design
- English
- Entrepreneurship
- Environmental Science
- Esports Management & Administration
- European Studies
- Forensic Science
- Film Studies
- French
- General Studio Art
- Health Care Management
- History
- Homeland Security
- Human Services
- Information Technology
- International Business
- International Studies
- Mathematics
- Media & Communication
- Media Writing
- Military Science & Leadership
- Music
- Music History
- Non-Profit Management
- Painting & Drawing
- Philosophy
- Photography
- Political Science
- Pre-Law
- Pre-Social Work
- Psychology
- Public Administration
- Public Health
- Public Relations
- Religion
- Sculpture
- Sociology
- Spanish
- Speech & Performance
- Sports Management
- Sports Media
- Therapeutic Horsemanship
- Writing

**Pre-Professional Studies**

- Pre-Athletic Training
- Pre-Dentistry
- Pre-Medicine
- Pre-Occupational Therapy
- Pre-Optometry
- Pre-Pharmacy
- Pre-Physical Therapy
- Pre-Physician Assistant
- Pre-Veterinary Medicine

# LAUNCH YOUR FUTURE WITH LANDER



YOUR STATE UNIVERSITY IN GREENWOOD, S.C.



**A PERFECT FIT**  
**4,200**  
APPROX. STUDENT BODY SIZE, WITH AN AVERAGE CLASS SIZE OF 20

**RELEVANT NOW**  
**90+**  
AREAS OF STUDY AND MARKET-DRIVEN PROGRAMS IN TODAY'S MOST IN-DEMAND FIELDS

**FOUNDED**  
**1872**  
FOUR-YEAR, PUBLIC, COEDUCATIONAL UNIVERSITY—ONE OF SOUTH CAROLINA'S OLDEST INSTITUTIONS OF HIGHER EDUCATION

**CAREER FOCUSED**  
**60+**  
NUMBER OF EMPLOYER RECRUITING AND GRADUATE SCHOOL REPS VISITING LANDER EACH YEAR

**Frozen Tuition**  
**\$11,700**  
**UNDERGRADUATE IN-STATE, FULL-TIME TUITION & GENERAL FEES**  
While Lander is rapidly growing, one thing that's not increasing is the cost to attend.

You've envisioned it before.

Your future.

It's big, and it's bold.

Because that's what your potential demands.

Now, it's time to make it happen.

At Lander University, the best way to launch big, bold futures... is together.

**Our Promise to You**

You'll find employment in your field within 60 days of graduation, or Lander will hire you as a graduate assistant and guarantee your acceptance into the Lander graduate program of your choice.\* As a graduate assistant, you will save 50% on graduate tuition and receive a \$6,000 stipend per year—that's Lander's commencement-to-career promise.

\*To qualify, students must graduate from Lander in four years with at least a 3.0 GPA. Offer begins for Class of 2025. Additional admissions requirements may apply for specific graduate programs.



**Visit Campus!**

Scan here to schedule your tour or visit online at [lander.edu/visit](http://lander.edu/visit).

Daily Tours M-F, 10:00 a.m. & 2:00 p.m.



320 Stanley Avenue | Greenwood, SC 29649  
 1-888-4LANDER | 864-388-8307  
[admissions@lander.edu](mailto:admissions@lander.edu) | [lander.edu](http://lander.edu)

For a complete list of academic programs, please visit: [lander.edu/majors-minors](http://lander.edu/majors-minors)

Lander University provides equal access and does not discriminate on the basis of race, color, sex, sexual orientation, religion, national origin, pregnancy, gender, gender identity, gender expression, genetic information, disability or age in its programs and activities. For further information on Lander's notice of nondiscrimination, visit [lander.edu/titleix](http://lander.edu/titleix) and [lander.edu/non-discrimination](http://lander.edu/non-discrimination).

**Majors**

- Biology
- Genetics
- Business Administration (BAS)
- Accounting
- Financial Services
- Health Care Management
- Hospitality Management
- IT Management
- Management/Marketing
- Sports Management

**Chemistry**

- Dual Engineering
- Forensic Science
- Health Sciences
- Secondary Certification

**Computer Information Systems**

- Dual Engineering
- Networking
- Software Development

**Criminology**

- Cybersecurity
- Computer Information Systems
- Political Science

**Data Science**

- Business Analytics
- Computer Information Systems
- Mathematics

**Digital Media Production**

- Early Childhood Education
- Montessori

**Elementary Education**

- English
- Creative Writing
- Professional Writing
- Secondary Teacher Certification

**Entrepreneurship**

- Environmental Science
- Forensic Science

**Exercise Science**

- Fitness & Wellness
- Graphic Design

**History**

- Public History
- Secondary Social Studies Teacher Certification
- Human Services
- Humanities

**Interdisciplinary Studies**

- Allied Health Studies
- Educational Psychology for Special Populations
- Environmental Health
- Equine-Assisted Activities & Therapies
- Financial Services & Public Relations
- Graphic Design & Marketing
- Health Promotion & Wellness: Behavioral Health
- Health Promotion & Wellness: Healthcare Management
- Health Promotion & Wellness: Human Services
- Health Promotion & Wellness: Policy
- International Environment & Sustainability
- Management, Public Relations
- Studies in Early Childhood Education & Psychology
- Studies in Early Childhood with Special Needs
- Teaching & Learning for Diverse Elementary Students (Reading/Media)

**International Studies**

- Mathematics
- Dual Engineering
- Secondary Teacher Certification

**Media & Communication**

- Medical Biology
- Middle Level Education
- Music
- Instrumental
- Keyboard
- Vocal
- K-12 Certification, Choral
- K-12 Certification, Instrumental
- K-12 Certification, Keyboard

**Nursing**

- Prelicensure
- RN to BSN Completion

- Paralegal Studies
- Physical Education, K-12 Teacher Certification
- Political Science
- Public Administration
- Psychology
- Public Health
- Genetic Health Studies
- Sociology
- Spanish
- Special Education
- Visual Art
- 2D Studio
- 3D Studio
- K-12 Teacher Certification

**Minors**

- Art History
- Biology
- Business Administration
- Ceramics
- Chemistry
- Child & Family Studies
- Computer Information Systems
- Criminal Justice
- Cybersecurity
- Data Science
- Design
- English
- Entrepreneurship
- Environmental Science
- Esports Management & Administration
- European Studies
- Forensic Science
- Film Studies
- French
- General Studio Art
- Health Care Management
- History
- Homeland Security
- Human Services
- Information Technology
- International Business
- International Studies
- Mathematics
- Media & Communication
- Media Writing
- Military Science & Leadership
- Music
- Music History
- Non-Profit Management
- Painting & Drawing
- Philosophy
- Photography
- Political Science
- Pre-Law
- Pre-Social Work
- Psychology
- Public Administration
- Public Health
- Public Relations
- Religion
- Sculpture
- Sociology
- Spanish
- Speech & Performance
- Sports Management
- Sports Media
- Therapeutic Horsemanship
- Writing

**Pre-Professional Studies**

- Pre-Athletic Training
- Pre-Dentistry
- Pre-Medicine
- Pre-Occupational Therapy
- Pre-Optometry
- Pre-Pharmacy
- Pre-Physical Therapy
- Pre-Physician Assistant
- Pre-Veterinary Medicine

# LAUNCH YOUR FUTURE WITH LANDER



YOUR STATE UNIVERSITY IN GREENWOOD, S.C.

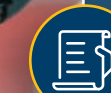


**Frozen Tuition**  
**\$11,700**

**UNDERGRADUATE IN-STATE, FULL-TIME TUITION & GENERAL FEES**  
 While Lander is rapidly growing, one thing that's not increasing is the cost to attend.



**A PERFECT FIT**  
**4,200**  
 APPROX. STUDENT BODY SIZE, WITH AN AVERAGE CLASS SIZE OF 20



**RELEVANT NOW**  
**90+**  
 AREAS OF STUDY AND MARKET-DRIVEN PROGRAMS IN TODAY'S MOST IN-DEMAND FIELDS



**FOUNDED 1872**  
 FOUR-YEAR, PUBLIC, COEDUCATIONAL UNIVERSITY—ONE OF SOUTH CAROLINA'S OLDEST INSTITUTIONS OF HIGHER EDUCATION



**CAREER FOCUSED**  
**60+**  
 NUMBER OF EMPLOYER RECRUITING AND GRADUATE SCHOOL REPS VISITING LANDER EACH YEAR

You've envisioned it before.

Your future.

It's big, and it's bold.

Because that's what your potential demands.

Now, it's time to make it happen.

At Lander University,

the best way to launch big, bold futures...

*is together.*

**Our Promise to You**

You'll find employment in your field within 60 days of graduation, or Lander will hire you as a graduate assistant and guarantee your acceptance into the Lander graduate program of your choice.\* As a graduate assistant, you will save 50% on graduate tuition and receive a \$6,000 stipend per year—that's Lander's commencement-to-career promise.

\*To qualify, students must graduate from Lander in four years with at least a 3.0 GPA. Offer begins for Class of 2025. Additional admissions requirements may apply for specific graduate programs.



**Visit Campus!**

Scan here to schedule your tour or visit online at [lander.edu/visit](http://lander.edu/visit).

**Daily Tours** M-F, 10:00 a.m. & 2:00 p.m.



320 Stanley Avenue | Greenwood, SC 29649  
 1-888-4LANDER | 864-388-8307  
[admissions@lander.edu](mailto:admissions@lander.edu) | [lander.edu](http://lander.edu)

For a complete list of academic programs, please visit: [lander.edu/majors-minors](http://lander.edu/majors-minors)

Lander University provides equal access and does not discriminate on the basis of race, color, sex, sexual orientation, religion, national origin, pregnancy, gender, gender identity, gender expression, genetic information, disability or age in its programs and activities. For further information on Lander's notice of nondiscrimination, visit [lander.edu/titleix](http://lander.edu/titleix) and [lander.edu/non-discrimination](http://lander.edu/non-discrimination).

**Majors**

- Biology
  - Genetics
- Business Administration (BAS)
  - Accounting
  - Financial Services
  - Health Care Management
  - Hospitality Management
  - IT Management
  - Management/Marketing
  - Sports Management
- Chemistry
  - Dual Engineering
  - Forensic Science
  - Health Sciences
  - Secondary Certification
- Computer Information Systems
  - Dual Engineering
  - Networking
  - Software Development
- Criminology
- Cybersecurity
  - Computer Information Systems
  - Political Science
- Data Science
  - Business Analytics
  - Computer Information Systems
  - Mathematics
- Digital Media Production
- Early Childhood Education
  - Montessori
- Elementary Education
- English
  - Creative Writing
  - Professional Writing
  - Secondary Teacher Certification
- Entrepreneurship
- Environmental Science
  - Forensic Science
- Exercise Science
- Fitness & Wellness
- Graphic Design
- History
  - Public History
  - Secondary Social Studies Teacher Certification
- Human Services
- Humanities
- Interdisciplinary Studies
  - Allied Health Studies
  - Educational Psychology for Special Populations
  - Environmental Health
  - Equine-Assisted Activities & Therapies
  - Financial Services & Public Relations
  - Graphic Design & Marketing
  - Health Promotion & Wellness: Behavioral Health
  - Health Promotion & Wellness: Healthcare Management
  - Health Promotion & Wellness: Human Services
  - Health Promotion & Wellness: Policy
  - International Environment & Sustainability Management, Public Relations
  - Studies in Early Childhood Education & Psychology
  - Studies in Early Childhood Education with Special Needs
  - Teaching & Learning for Diverse Elementary Students (Reading/Media)
- International Studies
- Mathematics
  - Dual Engineering
  - Secondary Teacher Certification
- Media & Communication
- Medical Biology
- Middle Level Education
- Music
  - Instrumental
  - Keyboard
  - Vocal
  - K-12 Certification, Choral
  - K-12 Certification, Instrumental
  - K-12 Certification, Keyboard
- Nursing
  - Prelicensure
  - RN to BSN Completion
- Paralegal Studies
- Physical Education,
  - K-12 Teacher Certification
- Political Science
  - Public Administration
- Psychology
- Public Health
  - Genetic Health Studies
- Sociology
- Spanish
  - Special Education
- Visual Art
  - 2D Studio
  - 3D Studio
  - K-12 Teacher Certification

**Minors**

- Art History
- Biology
- Business Administration
- Ceramics
- Chemistry
- Child & Family Studies
- Computer Information Systems
- Criminal Justice
- Cybersecurity
- Data Science
- Design
- English
- Entrepreneurship
- Environmental Science
- Esports Management & Administration
- European Studies
- Forensic Science
- Film Studies
- French
- General Studio Art
- Health Care Management
- History
- Homeland Security
- Human Services
- Information Technology
- International Business
- International Studies
- Mathematics
- Media & Communication
- Media Writing
- Military Science & Leadership
- Music
- Music History
- Non-Profit Management
- Painting & Drawing
- Philosophy
- Photography
- Political Science
- Pre-Law
- Pre-Social Work
- Psychology
- Public Administration
- Public Health
- Public Relations
- Religion
- Sculpture
- Sociology
- Spanish
- Speech & Performance
- Sports Management
- Sports Media
- Therapeutic Horsemanship
- Writing

**Pre-Professional Studies**

- Pre-Athletic Training
- Pre-Dentistry
- Pre-Medicine
- Pre-Occupational Therapy
- Pre-Optometry
- Pre-Pharmacy
- Pre-Physical Therapy
- Pre-Physician Assistant
- Pre-Veterinary Medicine

# LAUNCH LANDER

YOUR FUTURE WITH



YOUR STATE UNIVERSITY IN GREENWOOD, S.C.

**A PERFECT FIT**  
**4,200**  
 APPROX. STUDENT BODY SIZE, WITH AN AVERAGE CLASS SIZE OF 20

**RELEVANT NOW**  
**90+**  
 AREAS OF STUDY AND MARKET-DRIVEN PROGRAMS IN TODAY'S MOST IN-DEMAND FIELDS

**FOUNDED**  
**1872**  
 FOUR-YEAR, PUBLIC, COEDUCATIONAL UNIVERSITY—ONE OF SOUTH CAROLINA'S OLDEST INSTITUTIONS OF HIGHER EDUCATION

**CAREER FOCUSED**  
**60+**  
 NUMBER OF EMPLOYER RECRUITING AND GRADUATE SCHOOL REPS VISITING LANDER EACH YEAR

**Frozen Tuition** UNDERGRADUATE IN-STATE, FULL-TIME TUITION & GENERAL FEES  
**\$11,700** While Lander is rapidly growing, one thing that's not increasing is the cost to attend.

You've envisioned it before.  
 Your future.  
 It's big, and it's bold.  
 Because that's what your potential demands.  
 Now, it's time to make it happen.  
 At Lander University,  
 the best way to launch big, bold futures...  
*is together.*

**Our Promise to You**  
 You'll find employment in your field within 60 days of graduation, or Lander will hire you as a graduate assistant and guarantee your acceptance into the Lander graduate program of your choice.\* As a graduate assistant, you will save 50% on graduate tuition and receive a \$6,000 stipend per year—that's Lander's commencement-to-career promise.

\*To qualify, students must graduate from Lander in four years with at least a 3.0 GPA. Offer begins for Class of 2025. Additional admissions requirements may apply for specific graduate programs.



**Visit Campus!**

Scan here to schedule your tour or visit online at [lander.edu/visit](http://lander.edu/visit).

Daily Tours M-F, 10:00 a.m. & 2:00 p.m.



320 Stanley Avenue | Greenwood, SC 29649  
 1-888-4LANDER | 864-388-8307  
[admissions@lander.edu](mailto:admissions@lander.edu) | [lander.edu](http://lander.edu)

For a complete list of academic programs, please visit: [lander.edu/majors-minors](http://lander.edu/majors-minors)

Lander University provides equal access and does not discriminate on the basis of race, color, sex, sexual orientation, religion, national origin, pregnancy, gender identity, gender expression, genetic information, disability or age in its programs and activities. For further information on Lander's notice of nondiscrimination, visit [lander.edu/titleix](http://lander.edu/titleix) and [lander.edu/non-discrimination](http://lander.edu/non-discrimination).

**Majors**

- Biology
  - Genetics
- Business Administration (BAS)
  - Accounting
  - Financial Services
  - Health Care Management
  - Hospitality Management
  - IT Management
  - Management/Marketing
  - Sports Management
- Chemistry
  - Dual Engineering
  - Forensic Science
  - Health Sciences
  - Secondary Certification
- Computer Information Systems
  - Dual Engineering
  - Networking
  - Software Development
- Criminology
- Cybersecurity
  - Computer Information Systems
  - Political Science
- Data Science
  - Business Analytics
  - Computer Information Systems
  - Mathematics
- Digital Media Production
- Early Childhood Education
  - Montessori
- Elementary Education
- English
  - Creative Writing
  - Professional Writing
  - Secondary Teacher Certification
- Entrepreneurship
- Environmental Science
  - Forensic Science
- Exercise Science
- Fitness & Wellness
- Graphic Design
- History
  - Public History
  - Secondary Social Studies Teacher Certification
- Human Services
- Humanities
- Interdisciplinary Studies
  - Allied Health Studies
  - Educational Psychology for Special Populations
  - Environmental Health
  - Equine-Assisted Activities & Therapies
  - Financial Services & Public Relations
  - Graphic Design & Marketing
  - Health Promotion & Wellness: Behavioral Health
  - Health Promotion & Wellness: Healthcare Management
  - Health Promotion & Wellness: Human Services
  - Health Promotion & Wellness: Policy
  - International Environment & Sustainability
  - Management, Public Relations
  - Studies in Early Childhood Education & Psychology
  - Studies in Early Childhood with Special Needs
  - Teaching & Learning for Diverse Elementary Students (Reading/Media)
- International Studies
- Mathematics
  - Dual Engineering
  - Secondary Teacher Certification
- Media & Communication
- Medical Biology
- Middle Level Education
- Music
  - Instrumental
  - Keyboard
  - Vocal
  - K-12 Certification, Choral
  - K-12 Certification, Instrumental
  - K-12 Certification, Keyboard
- Nursing
  - Prelicensure
  - RN to BSN Completion
- Paralegal Studies
- Physical Education,
  - K-12 Teacher Certification
- Political Science
  - Public Administration
- Psychology
- Public Health
  - Genetic Health Studies
- Sociology
- Spanish
  - Special Education
- Visual Art
  - 2D Studio
  - 3D Studio
  - K-12 Teacher Certification

**Minors**

- Art History
- Biology
- Business Administration
- Ceramics
- Chemistry
- Child & Family Studies
- Computer Information Systems
- Criminal Justice
- Cybersecurity
- Data Science
- Design
- English
- Entrepreneurship
- Environmental Science
- Esports Management & Administration
- European Studies
- Forensic Science
- Film Studies
- French
- General Studio Art
- Health Care Management
- History
- Homeland Security
- Human Services
- Information Technology
- International Business
- International Studies
- Mathematics
- Media & Communication
- Media Writing
- Military Science & Leadership
- Music
- Music History
- Non-Profit Management
- Painting & Drawing
- Philosophy
- Photography
- Political Science
- Pre-Law
- Pre-Social Work
- Psychology
- Public Administration
- Public Health
- Public Relations
- Religion
- Sculpture
- Sociology
- Spanish
- Speech & Performance
- Sports Management
- Sports Media
- Therapeutic Horsemanship
- Writing

**Pre-Professional Studies**

- Pre-Athletic Training
- Pre-Dentistry
- Pre-Medicine
- Pre-Occupational Therapy
- Pre-Optometry
- Pre-Pharmacy
- Pre-Physical Therapy
- Pre-Physician Assistant
- Pre-Veterinary Medicine

# LAUNCH YOUR FUTURE WITH LANDER



YOUR STATE UNIVERSITY IN GREENWOOD, S.C.

**Frozen Tuition** UNDERGRADUATE IN-STATE, FULL-TIME TUITION & GENERAL FEES  
**\$11,700** While Lander is rapidly growing, one thing that's not increasing is the cost to attend.

**A PERFECT FIT**  
**4,200** APPROX. STUDENT BODY SIZE, WITH AN AVERAGE CLASS SIZE OF 20

**CAREER FOCUSED**  
**60+** NUMBER OF EMPLOYER RECRUITING AND GRADUATE SCHOOL REPS VISITING LANDER EACH YEAR

**FOUNDED**  
**1872** FOUR-YEAR, PUBLIC, COEDUCATIONAL UNIVERSITY—ONE OF SOUTH CAROLINA'S OLDEST INSTITUTIONS OF HIGHER EDUCATION

**RELEVANT NOW**  
**90+** AREAS OF STUDY & MARKET-DRIVEN PROGRAMS IN TODAY'S MOST IN-DEMAND FIELDS

You've envisioned it before.  
 Your future.  
 It's big, and it's bold.  
 Because that's what your potential demands.  
 Now, it's time to make it happen.  
 At Lander University,  
 the best way to launch big, bold futures...  
 is together.

**Our Promise to You**  
 You'll find employment in your field within 60 days of graduation, or Lander will hire you as a graduate assistant and guarantee your acceptance into the Lander graduate program of your choice.\* As a graduate assistant, you will save 50% on graduate tuition and receive a \$6,000 stipend per year—that's Lander's commencement-to-career promise.

\* To qualify, students must graduate from Lander in four years with at least a 3.0 GPA. Offer begins for Class of 2025. Additional admissions requirements may apply for specific graduate programs.



**Visit Campus!**

Scan here to schedule your tour or visit online at [lander.edu/visit](http://lander.edu/visit).

Daily Tours M-F, 10:00 a.m. & 2:00 p.m.



320 Stanley Avenue | Greenwood, SC 29649  
1-888-4LANDER | 864-388-8307  
[admissions@lander.edu](mailto:admissions@lander.edu) | [lander.edu](http://lander.edu)

For a complete list of academic programs, please visit: [lander.edu/majors-minors](http://lander.edu/majors-minors)

Lander University provides equal access and does not discriminate on the basis of race, color, sex, sexual orientation, religion, national origin, pregnancy, gender, gender identity, gender expression, genetic information, disability or age in its programs and activities. For further information on Lander's notice of nondiscrimination, visit [lander.edu/titleix](http://lander.edu/titleix) and [lander.edu/non-discrimination](http://lander.edu/non-discrimination).

**Majors**

- Biology
- Genetics
- Business Administration (BAS)
- Business Administration
- Accounting
- Financial Services
- Health Care Management
- Hospitality Management
- IT Management
- Management/Marketing
- Sports Management

**Chemistry**

- Dual Engineering
- Forensic Science
- Health Sciences
- Secondary Certification
- Computer Information Systems
- Dual Engineering
- Networking
- Software Development

**Criminology**

- Cybersecurity
- Computer Information Systems
- Political Science

**Data Science**

- Business Analytics
- Computer Information Systems
- Mathematics

**Digital Media Production**

- Early Childhood Education

**Elementary Education**

- English
- Creative Writing
- Professional Writing
- Secondary Teacher Certification

**Entrepreneurship**

- Environmental Science
- Forensic Science

**Exercise Science**

- Fitness & Wellness
- Graphic Design

**History**

- Public History
- Secondary Social Studies Teacher Certification

**Human Services**

- Humanities

**Interdisciplinary Studies**

- Allied Health Studies
- Educational Psychology for Special Populations
- Environmental Health

**Equine-Assisted Activities & Therapies**

- Financial Services & Public Relations
- Graphic Design & Marketing
- Health Promotion & Wellness: Behavioral Health
- Health Promotion & Wellness: Healthcare Management
- Health Promotion & Wellness: Human Services
- Health Promotion & Wellness: Policy

**International Environment & Sustainability**

- Management, Public Relations
- Studies in Early Childhood Education & Psychology
- Studies in Early Childhood with Special Needs
- Teaching & Learning for Diverse Elementary Students (Reading/Media)

**International Studies**

- Mathematics
- Dual Engineering
- Secondary Teacher Certification

**Media & Communication**

- Medical Biology
- Middle Level Education

**Music**

- Instrumental
- Keyboard
- Vocal
- K-12 Certification, Choral
- K-12 Certification, Instrumental
- K-12 Certification, Keyboard

**Nursing**

- Prelicensure
- RN to BSN Completion

**Paralegal Studies**

- Physical Education, K-12 Teacher Certification
- Political Science
- Public Administration

**Psychology**

- Public Health
- Genetic Health Studies

**Sociology**

- Spanish
- Special Education

**Visual Art**

- 2D Studio
- 3D Studio
- K-12 Teacher Certification

**Minors**

- Art History
- Biology
- Business Administration
- Ceramics
- Chemistry
- Child & Family Studies
- Computer Information Systems
- Criminal Justice
- Cybersecurity
- Data Science
- Design
- English
- Entrepreneurship
- Environmental Science
- Esports Management & Administration
- European Studies
- Forensic Science
- Film Studies
- French
- General Studio Art
- Health Care Management
- History
- Homeland Security
- Human Services
- Information Technology
- International Business
- International Studies
- Mathematics
- Media & Communication
- Media Writing
- Military Science & Leadership
- Music
- Music History
- Non-Profit Management
- Painting & Drawing
- Philosophy
- Photography
- Political Science
- Pre-Law
- Pre-Social Work
- Psychology
- Public Administration
- Public Health
- Public Relations
- Religion
- Sculpture
- Sociology
- Spanish
- Speech & Performance
- Sports Management
- Sports Media
- Therapeutic Horsemanship
- Writing


**Pre-Professional Studies**

- Pre-Athletic Training
- Pre-Dentistry
- Pre-Medicine
- Pre-Occupational Therapy
- Pre-Optometry
- Pre-Pharmacy
- Pre-Physical Therapy
- Pre-Physician Assistant
- Pre-Veterinary Medicine

# LAUNCH YOUR FUTURE WITH LANDER




YOUR STATE UNIVERSITY IN GREENWOOD, S.C.

**Frozen Tuition**  **UNDERGRADUATE IN-STATE, FULL-TIME TUITION & GENERAL FEES**  
**\$11,700** While Lander is rapidly growing, one thing that's not increasing is the cost to attend.


**A PERFECT FIT**   
**4,200**  
APPROX. STUDENT BODY SIZE, WITH AN AVERAGE CLASS SIZE OF 20

**RELEVANT NOW**   
**90+**  
AREAS OF STUDY AND MARKET-DRIVEN PROGRAMS IN TODAY'S MOST IN-DEMAND FIELDS

**CAREER FOCUSED**   
**60+**  
NUMBER OF EMPLOYER RECRUITING AND GRADUATE SCHOOL REPS VISITING LANDER EACH YEAR

**FOUNDED**   
**1872**  
FOUR-YEAR, PUBLIC, COEDUCATIONAL UNIVERSITY—ONE OF SOUTH CAROLINA'S OLDEST INSTITUTIONS OF HIGHER EDUCATION

You've envisioned it before.  
Your future.  
It's big, and it's bold.  
Because that's what your potential demands.  
Now, it's time to make it happen.  
At Lander University,  
the best way to launch big, bold futures...  
*is together.*

**Our Promise to You**   
You'll find employment in your field within 60 days of graduation, or Lander will hire you as a graduate assistant and guarantee your acceptance into the Lander graduate program of your choice.\* As a graduate assistant, you will save 50% on graduate tuition and receive a \$6,000 stipend per year—that's Lander's commencement-to-career promise.

\*To qualify, students must graduate from Lander in four years with at least a 3.0 GPA. Offer begins for Class of 2025. Additional admissions requirements may apply for specific graduate programs.



**Visit Campus!**

Scan here to schedule your tour or visit online at [lander.edu/visit](http://lander.edu/visit).

**Daily Tours** M-F, 10:00 a.m. & 2:00 p.m.



320 Stanley Avenue | Greenwood, SC 29649  
1-888-4LANDER | 864-388-8307  
[admissions@lander.edu](mailto:admissions@lander.edu) | [lander.edu](http://lander.edu)

For a complete list of academic programs, please visit: [lander.edu/majors-minors](http://lander.edu/majors-minors)

Lander University provides equal access and does not discriminate on the basis of race, color, sex, sexual orientation, religion, national origin, pregnancy, gender, gender identity, gender expression, genetic information, disability or age in its programs and activities. For further information on Lander's notice of nondiscrimination, visit [lander.edu/titleix](http://lander.edu/titleix) and [lander.edu/non-discrimination](http://lander.edu/non-discrimination).

**Majors**

- Biology
  - Genetics
- Business Administration (BAS)
  - Accounting
  - Financial Services
  - Health Care Management
  - Hospitality Management
  - IT Management
  - Management/Marketing
  - Sports Management
- Chemistry
  - Dual Engineering
  - Forensic Science
  - Health Sciences
  - Secondary Certification
- Computer Information Systems
  - Dual Engineering
  - Networking
  - Software Development
- Criminology
- Cybersecurity
  - Computer Information Systems
  - Political Science
- Data Science
  - Business Analytics
  - Computer Information Systems
  - Mathematics
- Digital Media Production
- Early Childhood Education
  - Montessori
- Elementary Education
- English
  - Creative Writing
  - Professional Writing
  - Secondary Teacher Certification
- Entrepreneurship
- Environmental Science
  - Forensic Science
- Exercise Science
- Fitness & Wellness
- Graphic Design
- History
  - Public History
  - Secondary Social Studies Teacher Certification
- Human Services
- Humanities
- Interdisciplinary Studies
  - Allied Health Studies
  - Educational Psychology for Special Populations
  - Environmental Health
  - Equine-Assisted Activities & Therapies
  - Financial Services & Public Relations
  - Graphic Design & Marketing
  - Health Promotion & Wellness: Behavioral Health
  - Health Promotion & Wellness: Healthcare Management
  - Health Promotion & Wellness: Human Services
  - Health Promotion & Wellness: Policy
  - International Environment & Sustainability Management, Public Relations
  - Studies in Early Childhood Education & Psychology
  - Studies in Early Childhood with Special Needs
  - Teaching & Learning for Diverse Elementary Students (Reading/Media)
- International Studies
- Mathematics
  - Dual Engineering
  - Secondary Teacher Certification
- Media & Communication
  - Medical Biology
  - Middle Level Education
- Music
  - Instrumental
  - Keyboard
  - Vocal
  - K-12 Certification, Choral
  - K-12 Certification, Instrumental
  - K-12 Certification, Keyboard
- Nursing
  - Prelicensure
  - RN to BSN Completion
- Paralegal Studies
- Physical Education,
  - K-12 Teacher Certification
- Political Science
  - Public Administration
- Psychology
  - Public Health
  - Genetic Health Studies
- Sociology
- Spanish
  - Special Education
- Visual Art
  - 2D Studio
  - 3D Studio
  - K-12 Teacher Certification

**Minors**

- Art History
- Biology
- Business Administration
- Ceramics
- Chemistry
- Child & Family Studies
- Computer Information Systems
- Criminal Justice
- Cybersecurity
- Data Science
- Design
- English
- Entrepreneurship
- Environmental Science
- Esports Management & Administration
- European Studies
- Forensic Science
- Film Studies
- French
- General Studio Art
- Health Care Management
- History
- Homeland Security
- Human Services
- Information Technology
- International Business
- International Studies
- Mathematics
- Media & Communication
- Media Writing
- Military Science & Leadership
- Music
- Music History
- Non-Profit Management
- Painting & Drawing
- Philosophy
- Photography
- Political Science
- Pre-Law
- Pre-Social Work
- Psychology
- Public Administration
- Public Health
- Public Relations
- Religion
- Sculpture
- Sociology
- Spanish
- Speech & Performance
- Sports Management
- Sports Media
- Therapeutic Horsemanship
- Writing

**Pre-Professional Studies**

- Pre-Athletic Training
- Pre-Dentistry
- Pre-Medicine
- Pre-Occupational Therapy
- Pre-Optometry
- Pre-Pharmacy
- Pre-Physical Therapy
- Pre-Physician Assistant
- Pre-Veterinary Medicine

# LAUNCH YOUR FUTURE WITH LANDER



YOUR STATE UNIVERSITY IN GREENWOOD, S.C.

**A PERFECT FIT**

**4,200**

APPROX. STUDENT BODY SIZE, WITH AN AVERAGE CLASS SIZE OF 20

**RELEVANT NOW**

**90+**

AREAS OF STUDY & MARKET-DRIVEN PROGRAMS IN TODAY'S MOST IN-DEMAND FIELDS

**CAREER FOCUSED**

**60+**

NUMBER OF EMPLOYER RECRUITING AND GRADUATE SCHOOL REPS VISITING LANDER EACH YEAR

**FOUNDED**

**1872**

FOUR-YEAR, PUBLIC, COEDUCATIONAL UNIVERSITY—ONE OF SOUTH CAROLINA'S OLDEST INSTITUTIONS OF HIGHER EDUCATION

**Frozen Tuition**

**\$11,700**

**UNDERGRADUATE IN-STATE, FULL-TIME TUITION & GENERAL FEES**

While Lander is rapidly growing, one thing that's not increasing is the cost to attend.

You've envisioned it before.  
Your future.  
It's big, and it's bold.  
Because that's what your potential demands.  
Now, it's time to make it happen.  
At Lander University,  
the best way to launch big, bold futures...  
*is together.*

**Our Promise to You**

You'll find employment in your field within 60 days of graduation, or Lander will hire you as a graduate assistant and guarantee your acceptance into the Lander graduate program of your choice.\* As a graduate assistant, you will save 50% on graduate tuition and receive a \$6,000 stipend per year—that's Lander's commencement-to-career promise.





**Visit Campus!**

Scan here to schedule your tour or visit online at [lander.edu/visit](http://lander.edu/visit).

**Daily Tours** M-F, 10:00 a.m. & 2:00 p.m.



320 Stanley Avenue | Greenwood, SC 29649  
1-888-4LANDER | 864-388-8307  
[admissions@lander.edu](mailto:admissions@lander.edu) | [lander.edu](http://lander.edu)

For a complete list of academic programs, please visit: [lander.edu/majors-minors](http://lander.edu/majors-minors)

Lander University provides equal access and does not discriminate on the basis of race, color, sex, sexual orientation, religion, national origin, pregnancy, gender, gender identity, gender expression, genetic information, disability or age in its programs and activities. For further information on Lander's notice of nondiscrimination, visit [lander.edu/titleix](http://lander.edu/titleix) and [lander.edu/non-discrimination](http://lander.edu/non-discrimination).

**Majors**

- Biology
  - Genetics
- Business Administration (BAS)
  - Accounting
  - Financial Services
  - Health Care Management
  - Hospitality Management
  - IT Management
  - Management/Marketing
  - Sports Management
- Chemistry
  - Dual Engineering
  - Forensic Science
  - Health Sciences
  - Secondary Certification
- Computer Information Systems
  - Dual Engineering
  - Networking
  - Software Development
- Criminology
- Cybersecurity
  - Computer Information Systems
  - Political Science
- Data Science
  - Business Analytics
  - Computer Information Systems
  - Mathematics
- Digital Media Production
- Early Childhood Education
  - Montessori
- Elementary Education
- English
  - Creative Writing
  - Professional Writing
  - Secondary Teacher Certification
- Entrepreneurship
- Environmental Science
  - Forensic Science
- Exercise Science
- Fitness & Wellness
- Graphic Design
- History
  - Public History
  - Secondary Social Studies Teacher Certification
- Human Services
- Humanities
- Interdisciplinary Studies
  - Allied Health Studies
  - Educational Psychology for Special Populations
  - Environmental Health
  - Equine-Assisted Activities & Therapies
  - Financial Services & Public Relations
  - Graphic Design & Marketing
  - Health Promotion & Wellness: Behavioral Health
  - Health Promotion & Wellness: Healthcare Management
  - Health Promotion & Wellness: Human Services
  - Health Promotion & Wellness: Policy
  - International Environment & Sustainability Management, Public Relations
  - Studies in Early Childhood Education & Psychology
  - Studies in Early Childhood with Special Needs
  - Teaching & Learning for Diverse Elementary Students (Reading/Media)
- International Studies
- Mathematics
  - Dual Engineering
  - Secondary Teacher Certification
- Media & Communication
- Medical Biology
- Middle Level Education
- Music
  - Instrumental
  - Keyboard
  - Vocal
  - K-12 Certification, Choral
  - K-12 Certification, Instrumental
  - K-12 Certification, Keyboard
- Nursing
  - Prelicensure
  - RN to BSN Completion
- Paralegal Studies
- Physical Education,
  - K-12 Teacher Certification
- Political Science
  - Public Administration
- Psychology
  - Public Health
  - Genetic Health Studies
- Sociology
- Spanish
  - Special Education
- Visual Art
  - 2D Studio
  - 3D Studio
  - K-12 Teacher Certification

**Minors**

- Art History
- Biology
- Business Administration
- Ceramics
- Chemistry
- Child & Family Studies
- Computer Information Systems
- Criminal Justice
- Cybersecurity
- Data Science
- Design
- English
- Entrepreneurship
- Environmental Science
- Esports Management & Administration
- European Studies
- Forensic Science
- Film Studies
- French
- General Studio Art
- Health Care Management
- History
- Homeland Security
- Human Services
- Information Technology
- International Business
- International Studies
- Mathematics
- Media & Communication
- Media Writing
- Military Science & Leadership
- Music
- Music History
- Non-Profit Management
- Painting & Drawing
- Philosophy
- Photography
- Political Science
- Pre-Law
- Pre-Social Work
- Psychology
- Public Administration
- Public Health
- Public Relations
- Religion
- Sculpture
- Sociology
- Spanish
- Speech & Performance
- Sports Management
- Sports Media
- Therapeutic Horsemanship
- Writing

**Pre-Professional Studies**

- Pre-Athletic Training
- Pre-Dentistry
- Pre-Medicine
- Pre-Occupational Therapy
- Pre-Optometry
- Pre-Pharmacy
- Pre-Physical Therapy
- Pre-Physician Assistant
- Pre-Veterinary Medicine

# LAUNCH YOUR FUTURE WITH LANDER



YOUR STATE UNIVERSITY IN GREENWOOD, S.C.

**RELEVANT NOW**

**90+**

AREAS OF STUDY & MARKET-DRIVEN PROGRAMS IN TODAY'S MOST IN-DEMAND FIELDS



**CAREER FOCUSED**

**60+**

NUMBER OF EMPLOYER RECRUITING AND GRADUATE SCHOOL REPS VISITING LANDER EACH YEAR



**A PERFECT FIT**  
**4,200**

APPROX. STUDENT BODY SIZE, WITH AN AVERAGE CLASS SIZE OF 20



**FOUNDED**

**1872**

FOUR-YEAR, PUBLIC, COEDUCATIONAL UNIVERSITY—ONE OF SOUTH CAROLINA'S OLDEST INSTITUTIONS OF HIGHER EDUCATION



**Frozen Tuition**  
**\$11,700**

**UNDERGRADUATE IN-STATE, FULL-TIME TUITION & GENERAL FEES**

While Lander is rapidly growing, one thing that's not increasing is the cost to attend.

You've envisioned it before.

Your future.

It's big, and it's bold.

Because that's what your potential demands.

Now, it's time to make it happen.

At Lander University,

the best way to launch big, bold futures...

*is together.*

**Our Promise to You**

You'll find employment in your field within 60 days of graduation, or Lander will hire you as a graduate assistant and guarantee your acceptance into the Lander graduate program of your choice.\* As a graduate assistant, you will save 50% on graduate tuition and receive a \$6,000 stipend per year—that's Lander's commencement-to-career promise.



\*To qualify, students must graduate from Lander in four years with at least a 3.0 GPA. Offer begins for Class of 2025. Additional admissions requirements may apply for specific graduate programs.



**Visit Campus!**

Scan here to schedule your tour or visit online at [lander.edu/visit](http://lander.edu/visit).

Daily Tours M-F, 10:00 a.m. & 2:00 p.m.



OFFICE OF ADMISSIONS

320 Stanley Avenue | Greenwood, SC 29649  
1-888-4LANDER | 864-388-8307  
admissions@lander.edu | [lander.edu](http://lander.edu)

For a complete list of academic programs, please visit: [lander.edu/majors-minors](http://lander.edu/majors-minors)

Lander University provides equal access and does not discriminate on the basis of race, color, sex, sexual orientation, religion, national origin, pregnancy, gender, gender identity, gender expression, genetic information, disability or age in its programs and activities. For further information on Lander's notice of nondiscrimination, visit [lander.edu/titleix](http://lander.edu/titleix) and [lander.edu/non-discrimination](http://lander.edu/non-discrimination).

**Majors**

- Biology
  - Genetics
- Business Administration (BAS)
  - Accounting
  - Financial Services
  - Health Care Management
  - Hospitality Management
  - IT Management
  - Management/Marketing
  - Sports Management
- Chemistry
  - Dual Engineering
  - Forensic Science
  - Health Sciences
  - Secondary Certification
- Computer Information Systems
  - Dual Engineering
  - Networking
  - Software Development
- Criminology
- Cybersecurity
  - Computer Information Systems
  - Political Science
- Data Science
  - Business Analytics
  - Computer Information Systems
  - Mathematics
- Digital Media Production
- Early Childhood Education
  - Montessori
- Elementary Education
- English
  - Creative Writing
  - Professional Writing
  - Secondary Teacher Certification
- Entrepreneurship
- Environmental Science
  - Forensic Science
- Exercise Science
- Fitness & Wellness
- Graphic Design
- History
  - Public History
  - Secondary Social Studies Teacher Certification
- Human Services
- Humanities
- Interdisciplinary Studies
  - Allied Health Studies
  - Educational Psychology for Special Populations
  - Environmental Health
  - Equine-Assisted Activities & Therapies
  - Financial Services & Public Relations
  - Graphic Design & Marketing
  - Health Promotion & Wellness: Behavioral Health
  - Health Promotion & Wellness: Healthcare Management
  - Health Promotion & Wellness: Human Services
  - Health Promotion & Wellness: Policy
  - International Environment & Sustainability Management, Public Relations
  - Studies in Early Childhood Education & Psychology
  - Studies in Early Childhood with Special Needs
  - Teaching & Learning for Diverse Elementary Students (Reading/Media)
- International Studies
- Mathematics
  - Dual Engineering
  - Secondary Teacher Certification
- Media & Communication
- Medical Biology
- Middle Level Education
- Music
  - Instrumental
  - Keyboard
  - Vocal
  - K-12 Certification, Choral
  - K-12 Certification, Instrumental
  - K-12 Certification, Keyboard
- Nursing
  - Prelicensure
  - RN to BSN Completion
- Paralegal Studies
- Physical Education,
  - K-12 Teacher Certification
- Political Science
  - Public Administration
- Psychology
- Public Health
  - Genetic Health Studies
- Sociology
- Spanish
  - Special Education
- Visual Art
  - 2D Studio
  - 3D Studio
  - K-12 Teacher Certification

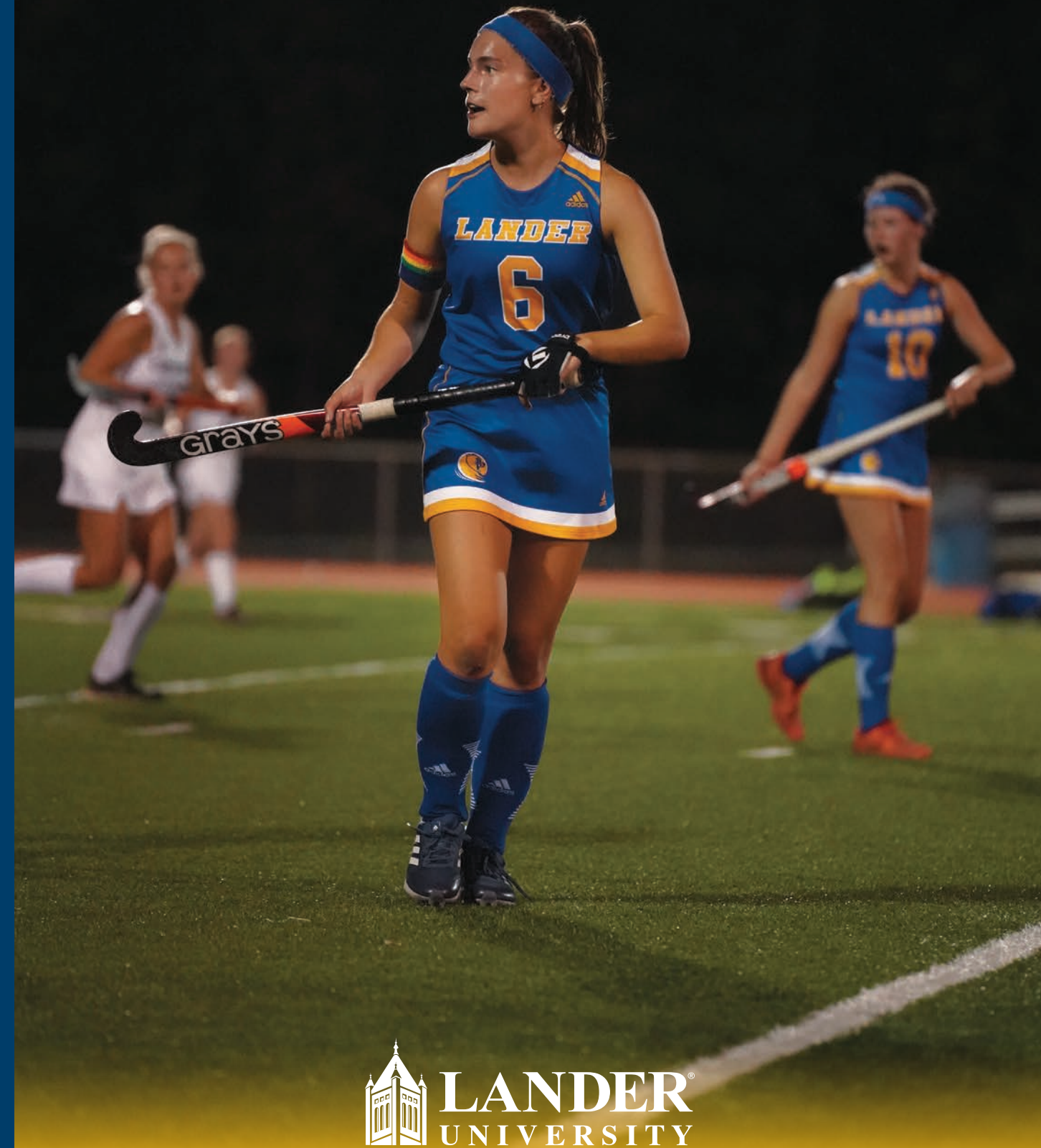
**Minors**

- Art History
- Biology
- Business Administration
- Ceramics
- Chemistry
- Child & Family Studies
- Computer Information Systems
- Criminal Justice
- Cybersecurity
- Data Science
- Design
- English
- Entrepreneurship
- Environmental Science
- Esports Management & Administration
- European Studies
- Forensic Science
- Film Studies
- French
- General Studio Art
- Health Care Management
- History
- Homeland Security
- Human Services
- Information Technology
- International Business
- International Studies
- Mathematics
- Media & Communication
- Media Writing
- Military Science & Leadership
- Music
- Music History
- Non-Profit Management
- Painting & Drawing
- Philosophy
- Photography
- Political Science
- Pre-Law
- Pre-Social Work
- Psychology
- Public Administration
- Public Health
- Public Relations
- Religion
- Sculpture
- Sociology
- Spanish
- Speech & Performance
- Sports Management
- Sports Media
- Therapeutic Horsemanship
- Writing

**Pre-Professional Studies**

- Pre-Athletic Training
- Pre-Dentistry
- Pre-Medicine
- Pre-Occupational Therapy
- Pre-Optometry
- Pre-Pharmacy
- Pre-Physical Therapy
- Pre-Physician Assistant
- Pre-Veterinary Medicine

# LAUNCH YOUR FUTURE WITH LANDER



YOUR STATE UNIVERSITY IN GREENWOOD, S.C.

**A PERFECT FIT**

**4,200**

APPROX. STUDENT BODY SIZE, WITH AN AVERAGE CLASS SIZE OF 20



**RELEVANT NOW**

**90+**

AREAS OF STUDY & MARKET-DRIVEN PROGRAMS IN TODAY'S MOST IN-DEMAND FIELDS



**CAREER FOCUSED**

**60+**

NUMBER OF EMPLOYER RECRUITING AND GRADUATE SCHOOL REPS VISITING LANDER EACH YEAR



**FOUNDED**

**1872**

FOUR-YEAR, PUBLIC, COEDUCATIONAL UNIVERSITY—ONE OF SOUTH CAROLINA'S OLDEST INSTITUTIONS OF HIGHER EDUCATION



**Frozen Tuition**

**\$11,700**

UNDERGRADUATE IN-STATE, FULL-TIME TUITION & GENERAL FEES

While Lander is rapidly growing, one thing that's not increasing is the cost to attend.

You've envisioned it before.

Your future.

It's big, and it's bold.

Because that's what your potential demands.

Now, it's time to make it happen.

At Lander University,

the best way to launch big, bold futures...

is together.

**Our Promise to You**

You'll find employment in your field within 60 days of graduation, or Lander will hire you as a graduate assistant and guarantee your acceptance into the Lander graduate program of your choice.\* As a graduate assistant, you will save 50% on graduate tuition and receive a \$6,000 stipend per year—that's Lander's commencement-to-career promise.



\*To qualify, students must graduate from Lander in four years with at least a 3.0 GPA. Offer begins for Class of 2025. Additional admissions requirements may apply for specific graduate programs.